

BUILDING NEWS



Upcoming Seminars & Trainings

Scaffold Training

Tuesday, November 29th
8am - 12:00pm

Confined Space Training

Tuesday, December 6th
9am - 11:30am

CPR + First Aid

Monday, December 12th
9am - 11:30am

Fall Protection

Tuesday, December 13th
9am - 11:30am

OSHA 10-Hour

Tuesday, January 10th
Wednesday, January 11th
9am - 4:00pm

CPR + First Aid

Monday, January 23rd
9am - 11:30am

OSHA 30-Hour

Tuesday, January 17th
Tuesday, January 24th
Tuesday, January 31st
Tuesday, February 7th
9am - 5:00pm



2022-23 NCBE Board of Directors**President**

ROBERT CANTU

[Western Builders](#)**1st Vice President**

LARRY RICHMOND

[Mill Creek Safety](#)**2nd Vice President**

TONY SIMMONS

[Nordby Construction Company](#)**Secretary/Treasurer**

AMY CHRISTOPHERSON BOLTEN

[Christopherson Builders](#)**Past President**

MIKE BEHLER

[Behler Construction Company](#)**Directors**

BRUCE BAGGENSTOS

[Baggenstos & Associates, Inc.](#)

WES BARRY

[Midstate Construction](#)

MARK BORGHESANI

[Kelseyville Lumber](#)

TOM BOYLAN

[Boylan Point Agency](#)

GEOFF COLEMAN

[BKF Engineers](#)

LISA FREEDMAN

[Wright Contracting](#)

DAN GALVIN

[Shapiro, Galvin, Shapiro & Moran](#)

CLAY GREEN

[CATS 4 U, Inc.](#)

DOUG HAMILTON

[Oak Grove Construction Company, Inc.](#)

KEN KREISCHER

[Western Water Constructors, Inc.](#)

JEFF SCOTT

[Mead Clark Lumber Company](#)

BARBIE SIMPSON

[Simpson Sheet Metal](#)

TOM SWEGLE

[RCX, Inc.](#)

REBECCA URIBE

Rock & Sons, Inc.

BRETT WILMES

[Soiland Company](#)

PAUL YEOMANS

[Exchange Bank](#)

ERIC ZIEDRICH

[Healdsburg Lumber Company](#)**This Week****Monday, November 14th, 2022****Vol. 68 #44**

Construction's death rate hasn't budged in 10 years	3-6
New Mental Health Guidelines an Imperfect but Encouraging Step.....	8-10
What Health Experts Expect for COVID-19 in California This Winter	11-12
Capitol Connection	14
6 Tips to Help Prevent Slips, Trips and Falls	16-17
Classified ads	22
Advertising Rates	23
Public Notices.....	24-28
Plan Room.....	29- 46

NORTH COAST MEETS THE NORTH POLE

HOLIDAY TOY DRIVE

Bring your new and unwrapped donations before Christmas! All donations benefit local toy distribution groups.

DROP-OFF AT 1030 APOLLO WAY, SANTA ROSA. CALL FOR OUR DROP-OFF LOCATIONS IN NAPA, MENDOCINO, AND LAKE COUNTIES.

Thank you for helping brighten this holiday season!



Despite OSHA's efforts, construction's death rate hasn't budged in 10 years

By Zachary Phillips, Julia Himmel and Noelle Knox

The death toll in construction hasn't changed in the past decade, raising important questions about the effectiveness of OSHA and what it would take to save more lives, according to an analysis by Construction Dive.

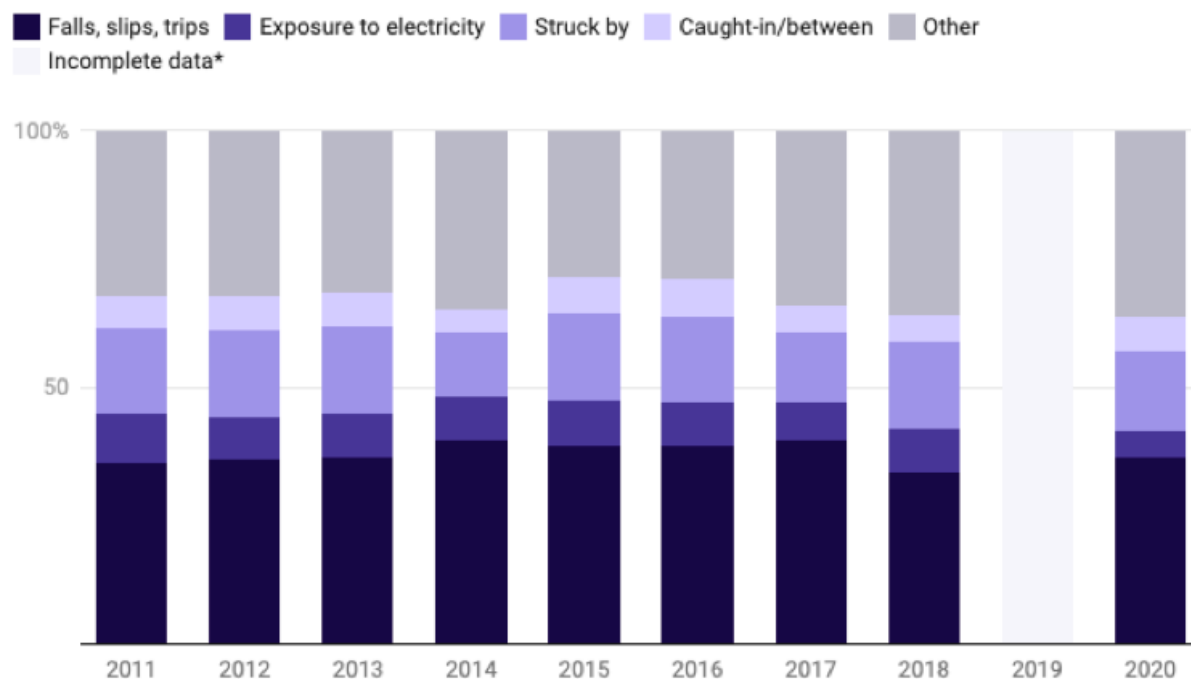
Workers continue to die at the same rate — 10 out of every 100,000 workers didn't come home between 2011 and 2020 — highlighting weak enforcement, meager inspections and fines, and the opioid epidemic. Funerals totaled 1,008 in 2020, the most recent data available. And three in five workers who perished consistently died from the same causes, known as the “Fatal Four.”

Falls and electrocutions still account for the most fatalities, along with accidents called “struck-bys” and “caught-in/betweens,” which cover a wide range of dangers, such as when a vehicle, piece of machinery or material strikes or traps a worker.

OSHA told Construction Dive it focuses much of its efforts in construction on education around the Fatal Four. But despite the agency's best efforts the share of workers dying from those well-known hazards remained stagnant from 2011 to 2020 while the workforce grew 31%.

The Fatal Four still account for same portion of worker deaths

Deaths on construction jobsites, 2011-2020



OSHA's definitions of Fatal Four hazards were used. *BLS collects and releases data one year after the fact. 2019's report included incomplete data due to the onset of the COVID-19 pandemic.

Chart: Julia Himmel/Construction Dive • Source: [Bureau of Labor Statistics](#) • [Get the data](#) • Created with [Datawrapper](#)

For OSHA to become a feared enforcer, experts say the agency would need to increase inspections exponentially, enforce fines more strictly, wield more tools at its disposal and expand preventative consultations.

More of Page 4

Despite OSHA's efforts, construction's death rate hasn't budged in 10 years

With last year's staff levels, for example, it would have taken inspectors 236 years to visit every workplace in the U.S., according to union group AFL-CIO's Death on the Job report. Fines would need to rise above the cost of doing business and find their targets, especially among small contractors, which account for about 90% of the industry and often fly under the radar.

OSHA would also need a broader mandate. Voluntary programs — such as jobsite consultations — would need to encompass more than the builders who go beyond the bare minimum. In addition, workers' compensation laws in some states might need to change to address the strong link between fatalities and the wait time for wage replacement.

OSHA targets high-risk hazards with its limited resources. The agency is on a hiring spree, after 12 years of steady staff reductions. And health and safety regulations were not designed to help save the increasing number of construction workers who die on the job from drug overdose and suicide. Many contractors with multiple serious fines for in-

cidents, injuries or deaths play "catch me if you can," by dodging fines and keeping their costs low, said Jay Bradshaw, executive officer of Nor Cal Carpenters Union, which represents 37,000 workers across 22 affiliated unions.

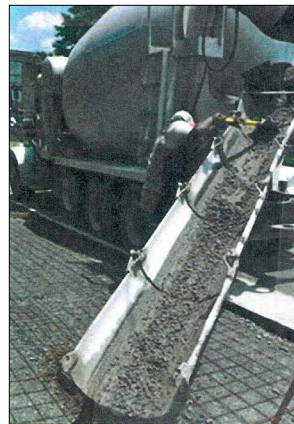
"That's a repeat offender — that clearly part of their business model is that they just bake in" the cost of fines, he said.

Even when they get caught, the price tags for violations are too low to deter bad actors.

More on Page 5

Looks what's rolling off our trucks

Everything you need for your next concrete installation is available at Wheeler Zamaroni.



- Concrete (Custom or Specified Mix Designs)
- Rebar
- Wire/Fiber Mesh
- Tie Wire Dobies
- Davis Color Concrete Pigment
- Cement Additives

We also supply

- Recycled Base Rock
- Recycled Drain Rock
- Structural Soil
- Biofiltration Mix
- Bioretention Mix
- Custom Soil Mix Designs
- Recycled Gypsum



Call us today **(707) 543-8400** or stop by our showroom at 3500 Petaluma Hill Rd., Santa Rosa

www.wzsupply.com



Republic Services of Sonoma County

We'll handle it from here.

FOR SERVICE OR INFORMATION
CONTACT YOUR AREA
CONSTRUCTION ACCOUNT
MANAGER
ELIZABETH XYDAS
707-529-9206
EXYDAS@REPUBLICSERVICES.COM

provides debris boxes to
Construction Sites....we
accept Construction &
Demolition materials
including Wood,
Concrete, Plastic, Metal,
and Sheetrock.



LeDUC & DEXTER INC.

CL #548129

Tel (707) 575-1500

Fax (707) 575-1276

Since 1982



Green Plumbers®

2833 - A Dowd Drive
P.O. Box 11157
Santa Rosa, CA 95406-1157
www.leducanddexterplumbing.com

Plumbing
Commercial / Residential
Winery / Industrial
Fire Protection
Radiant Heating

Despite OSHA's efforts, construction's death rate hasn't budged in 10 years

The average federal OSHA penalty for a serious breach was \$4,460 last year, the AFL-CIO report found. The median penalty for death on a jobsite was \$9,753 — roughly the cost of 20,000 board feet of lumber.

Complicated and hazardous work led to the majority of deaths on commercial jobsites. In 2020, almost a quarter of workers who died were in residential construction or specialty contractors who worked on residential projects.

Cost versus safety

Competition, inflation and supply-chain snags are all contributing to a race to the bottom. The lower the bid, the higher the chance of winning. When developers don't demand contractors live up to certain safety standards, they allow offenders to undercut other contractors, said Ken Simonson, chief economist for Associated General Contractors of America.

Carol Sigmond, partner at national law firm Greenspoon Marder, who represents many subcontractors, confirmed, "For the contractors who periodically close up and re-open, the fines are just a cost of doing business."

Worse, OSHA often fails even to collect its fines. Employers across all industries skirted \$100 million in fines between fiscal years 2018 and 2020, according to a Bloomberg Law investigation. One in five employers don't pay up, Bloomberg found. That meant OSHA wrote off about 14% of the fines from that period, according to data OSHA shared with Construction Dive via email.

The agency has worked a little with the U.S. Department of Justice to improve its debt collection. "We are planning some inroads that, although they may be small, we're still trying," said Scott Ketcham, director of OSHA's directorate of construction. He emphasized that OSHA is an enforcement agency, not punitive.

Carrot and stick

Under the Occupational Safety and Health Act of 1970 — which formed OSHA — a safe workplace is the employer's responsibility, but the agency sets the bar and enforces the rules.

The agency doesn't get to dictate its own budget and scope. OSHA lost \$12.5 million to sequestration in 2013, for example, then saw its budget increase by \$24 million in 2020. In fiscal year 2022 OSHA requested 155 new federal inspectors. Congress funded salaries for 85, according to Bloomberg.

But it's not the job of these inspectors to decide who can stay in business, said Kevin Cannon, senior director of safety and health services for AGC. They offer employers a carrot in terms of education of hazards, and a stick in terms of penalties.

"Our goal is to protect workers and make sure that employers are protecting their workers as well," OSHA's Ketcham said.

He also pointed out that jobsite deaths from overdoses and suicides, just 3% in 2011, now account for one in 10, and both causes fall outside OSHA's standards for a safe workplace.

Fines with no teeth

At first glance it's surprising: There is no correlation between higher average fines and lower death rates, according to John Mendeloff, professor at the graduate school of public and international affairs at the University of Pittsburgh.

[More on Page 6](#)

Despite OSHA's efforts, construction's death rate hasn't budged in 10 years

From Page 5

The unpleasant truth is that fines aren't high enough to curb risky decisions.

"We're talking about, for example, the difference between an average penalty of \$1,000 versus say \$2,000," he said. That kind of gap doesn't seem to make a difference. "Now that doesn't mean, for example, that if you get a \$20,000 or \$50,000 penalty, that it doesn't have an effect. But those are pretty rare."

Under the Federal Civil Penalties Inflation Adjustment Act Improvements Act of 2015, OSHA fines rise with inflation every Jan. 15. Prior to that, penalties hadn't increased since 1990. New legislation would be needed to make fines really bite.

OSHA could not quantify how often penalties are contested, reduced or removed. However, in September, OSHA expanded the Severe Violator Enforcement Program (SVEP) — designed to reform repeat offenders with serious violations — to include more employers and standards. Nevertheless, OSHA doesn't have concrete data for the number of active employers in SVEP, as the small employers can easily vanish.

Those small businesses can more easily close down and pop up under a new name to avoid penalties. That's harder for large builders to do.

Small builders fly below the radar

For small builders, sometimes the owner is hammering nails alongside their six or seven employees. The owner may wear the hats of HR, payroll and safety director, said Chris Cain, executive director for the Center for Construction Research and Training, known as CPWR.

The vast majority of U.S. contractors are small businesses with fewer than 20 workers, Cannon said. And hazards more often go unnoticed or uninspected on small jobsites.

"The million-dollar question is how do you get in touch with those folks?" Cannon said.

Employers don't fear the whip crack enough, said MK Fletcher, safety and health specialist for AFL-CIO.

"What it comes down to is employers need to know that OSHA could show up to their work site and could cite them and hold them accountable," Fletcher said. "And those penalties need to be meaningful."

Carpenter's union executive Bradshaw said in some extreme cases threats of criminal charges over potential manslaughter or criminal negligence could sharpen OSHA's enforcement teeth.

All deaths are preventable


Construction is full of hazardous jobs: working from heights, with heavy machinery, on major roadways, in trenches and with dangerous substances.

Nonetheless, both OSHA and major construction groups maintain that all jobsite deaths are preventable.

"Why is it in my 40-plus years being in construction, if there's ever an incident, there's always something that wasn't done correctly?" said Sizemore, who, in addition to his role at ABC, also sits on OSHA's construction advisory committee.

Asked why the rate of incidents hasn't gone down, he said, "Maybe because the responsibility stops at the worker and doesn't go all the way up to the top of that organization."


When it doesn't go to the top, OSHA's safety net has holes too big to catch everyone.



CLASSIC MILL & CABINET

590 Santana Dr., Cloverdale, CA 95425

www.classicmill.com
Contractor's Lic.# 408501

 WOODWORK INSTITUTE
CERTIFIED

(707) 894-9800
Fax (707) 894-2159



Closet CRAFTERS
Organizing your life

Design Consultations Available

Give us a call or visit our Showroom

1824 Empire Industrial Ct
Santa Rosa, CA 95403

Open Monday-Friday
9:00 AM - 5:30 PM

(707) 546-1009
www.ClosetCrafters.com

Contractors License #1030875

PACIFIC COAST CUTTERS, INC.**Your concrete & asphalt cutting contractor**

CA Lic. #628194

Gas & Electric Sawing, Grinding
Wall Sawing & Diamond Chain Sawing,
Core Drilling & Rock Drilling,
Hand & Bobcat Breaking & Removal

450 Lakeville St., Ste. B, Petaluma, CA 94952

pacificcoastcutters.com

(707) 765-0661 - (415) 499-8134 - (800) 300-0663 - Fax: (707) 765-0693



- Residential
- Wineries
- Fireplaces
- Commercial
- Decorative
- Structural

3250 Dutton Ave.
Santa Rosa, CA 95407
CA License #548373
www.shannonmasonryconstruction.com

QUALITY MASONRY SERVICES

Stone | Brick | Block | Concrete



Matt Davis, President
Est. 1999

License: 765188
Classification: B & C-8

General Contracting
Commercial & Residential

Custom Homes • Wineries • Concrete • Framing
Specializing in Custom Concrete and Framing Subcontracting

447 Aviation Blvd, Ste. 2, Santa Rosa, CA 95403 // Office: 707.838.8904 // Fax: 707.838.8246

DS Waterproofing

PO Box 5396
Santa Rosa, CA 95402-5396
707-526-5250 (O)
800-838-8413 (F)
tarboy@msn.com

Specializing in Elastomeric Deck Systems
Class A Fire Rated Deck Coatings
Foundation Waterproofing
Shower Pan Waterproofing Systems

Douglas J. Silva Owner

CA Lic. 564070

BOHAN & CANELIS
General Engineering

License #829905

www.bcgeinc.com

- Site Preparations
- Excavation & Grading
- Septic System Installation
- Driveways & Building Pads
- Material & Equipment Transportation
- Discing & Mowing of roadsides, levees, dams, slopes & large acreages

Nick Canelis

P.O. Box 186
Cazadero, CA 95421
Phone (707) 632-5708
Cell (707) 889-0298
Fax (707) 632-6342
nick@bcgeinc.com



Brett Wilmes
Outside Sales Representative
(707) 207-1306

Soiland Company | soilandrocks.com

Stony Point
Rock Quarry

Soils Plus
Soils & Amendments

Grab N' Grow
Soil & Compost

Proud Members of the *SOILAND* Family**United States Plumbing**

Service - Remodel - New Construction
Emergency Service - Drain Cleaning

Ryan E. Boyd

20+ Years. Master Plumber



UNITED STATES PLUMBING
CA.C-36 1084090

CALL ANY TIME!
(707)843-0065

Unitedstatesplumbing@gmail.com
www.unitedstatesplumbing.net

P.O. Box 1851
Santa Rosa
Ca.95402



Jeff Leyden

General
Engineering
Lic. #899560

SEWER • WATER • SEPTIC SYSTEMS
GRADING • PAVING • EROSION CONTROL

vrcinc@yahoo.com
(707) 869-0901 • Fax (707) 869-0953
P.O. Box 2308 • Guerneville, CA 95446-2308

New Mental Health Guidelines an Imperfect but Encouraging Step

These new WHO and ILO guidelines would enable a safe space for employees while simultaneously destigmatizing mental illness in the workplace.

Over the past couple of years, mental health has come to the forefront as the ripple effects of the pandemic shone a staggering light on the different challenges people were facing. According to a study by the National Institute of Mental Health, nearly one in five U.S. adults suffered from mental illness in 2019, and the numbers increased when the pandemic hit in 2020, abruptly pushing many into a long period of isolation, unemployment, and illness. As the world is trying to reconstruct and reshape the life it once knew before the pandemic, conversations around mental health are taking place with renewed importance inside homes, schools, and the workplace.

The World Health Organization (WHO) and the International Labour Organization (ILO) recently published their first-ever global guidelines on mental health and work, which aim to inform businesses about ensuring safe and supportive working conditions that promote mental health. These guidelines are a much-needed contribution to the workplace environment, particularly for Occupational Health and Safety (OH&S) professionals.

Benefits of the WHO and ILO Guidelines in the Workplace

The OH&S field's focus has always been the safety, health, and welfare of people at work; however, concerns around mental health have traditionally been brushed to the side in favor of more tangible physical safety. According to the United States Department of Labor Occupational Safety and Health Administration's standard under 1904.5(b)(2), employees can bring concerns about mental illness to their managers; however, employees cannot prove their concerns are work-related without a doctor's confirmation note. Acquiring that kind of proof is even more difficult considering the historical lack of access to sufficient mental health experts and resources across the U.S.

These new WHO and ILO guidelines would enable a safe space for employees while simultaneously destigmatizing mental illness in the workplace. These new guidelines are also particularly important at a time when the economy is entering a shift towards what some may think is a recession and prolonged period of economic uncertainty.

Research has linked economic recessions and financial turmoil with a rise in mental health issues. During the Great Recession in 2007 – 2009, the loss of a job increased the risk of a mood disorder in the U.S. by 22%. In the new WHO and ILO guidelines, it is stated that rates of already-common conditions such as depression and anxiety went up by more than 25% in the first year of the pandemic, adding to the nearly one billion people who were already living with mental disorders.

Organizations must be equipped to help their employees with issues concerning mental health, and these guidelines are a strong first step to helping companies navigate challenging years ahead.

Beyond the Guidelines: An Emphasis on Leadership Accountability

The new WHO and ILO guidelines call out great actionable steps for companies to take into consideration and address the misconception that companies should focus on individuals rather than deliver broader organizational improvements around mental health. While the guidelines presented are a great step in the right direction, it is also important to recognize what else can be done to ensure that mental health issues are considered and taken seriously within the workplace – especially at the leadership level.

Managers and executive leadership play a huge role in setting the tone of the workplace environment. That is why the onus should be on leadership concerning mental health at work because it is their responsibility to safeguard and cultivate a safe space for employees to thrive in the workplace. When employees are dismissed or their concerns are not considered, that creates a trickle-down effect that results in employees leaving the workplace in droves.

People managers need to reevaluate how they manage the workforce and consider using more of their soft skills. Managers are often promoted solely for their professional capabilities, with little consideration given to their people management abilities – a soft skill that is often overlooked. Seeing mental health awareness and training included as a key criterion for promotion eligibility would be one way that WHO and ILO could encourage a true change in how organizations deal with mental health in the workplace.

**TOTAL SITE PREP - GRADING AND
EXCAVATING** **100 YEARS** **- PAVING
UNDERGROUND - STORM DRAIN,
SEWER AND WATER LINES - SITE AND
STRUCTURE CONCRETE - SOIL STABILIZATION
EQUIPMENT RENTAL - TEAMWORK
SOLUTIONS EXCELLENCE**



CORPORATE OFFICE (707) 585.1221 - MARIN OFFICE **100 YEARS (415) 256.1525 - LIVERMORE OFFICE (925) 583.0979
SUNNYVALE OFFICE (408) 636.2938 - AMERICAN CANYON OFFICE (707) 556.9145**

WWW.GHILOTTI.COM

Lic. #644515

New Mental Health Guidelines an Imperfect but Encouraging Step

From Page 9

Actively Taking the Right Step Towards a Change in the Workplace

For the last several decades, business leaders' lack of awareness and knowledge have contributed to the stereotypes and fear around mental health. Now that mental health is being discussed more, it creates opportunities for new learnings and understanding on the topic, especially in the workplace. To really see mental health taken seriously within the workplace, everyone within the organization will need to adopt a new attitude and approach toward mental health to ensure that it is continuously promoted and protected within the workplace.

The new WHO and ILO guidelines are a great step in the right direction – but there is more work to do. Hopefully, these new guidelines will influence new and further developments around mental health across industries, promoting awareness and the need for change.

Corey Cleland, CEO
Project Manager

112 Pine Breeze Lane
Sebastopol, CA 95472
Cell 707-494-9051
Tel 707-829-8589
Fax 707-823-9760
corey@carybuilders.com

License #738609
www.carybuilders.com

CARY & ASSOCIATES Builders, Inc.

58201-Business Cards - 2 Names Digital-3



Battery Storage: Technology, Performance, & Trends Class

This course takes an in-depth look into residential battery backup systems, and the benefits and incentives available to homeowners and contractors.

Presented by Chris Calwell of Ecos Research.

Hosted by

SCP's Advanced Energy Center



741 Fourth Street, Santa Rosa

November 15 | 4:00 P.M. - 6:00 P.M.

Register at scpadvancedenergycenter.org



What Public Health Experts Expect for COVID-19 in California This Winter

Two California public health experts said a surge of COVID-19 could be coming soon and pleaded with all Californians to get vaccinated, including older adults and young children under 5.

At a virtual town hall hosted by state Senator Nancy Skinner on Tuesday night, UC San Francisco Department of Medicine Chair Dr. Robert Wachter and California State Epidemiologist Dr. Erica Pan addressed the current moment in the pandemic and what might be coming up in California.

During the panel, Wachter and Pan discussed the high probability of a COVID surge, the worrying unknowns of long COVID and low vaccination and booster rates among people who can get extremely sick.

A winter surge is possible

Both Wachter and Pan seemed confident that an upcoming surge of COVID-19 is likely. How big of a surge? Neither expert hazarded a guess.

“Winter will drive people inside,” said Wachter.

“There are these new variants that are coming out that are at least somewhat immune evasive.”

Wachter added the new variants aren’t “massively scary” but seem to be taking over from the BA.5 variant. And he said the virus may proliferate more, because “back-pressure” against rising case rates is mostly gone.

“Unfortunately, in the old days, if you started to see a surge, people immediately started being more careful and putting masks on,” Wachter said. “I’m not confident that will happen, at least to the same degree that it used to happen.”

Pan also nodded to the relative severity of other respiratory infections, including the flu, in other parts of the country. Although we haven’t seen high numbers in California, respiratory syncytial virus (RSV) which seriously affects infants and young children, is also surging in the U.S.

[More on Page 12](#)



Lic. #793504 C13 C23 C51

1230 Century Court • Santa Rosa, CA 95403

Tel (707) 573-0742 • Fax (707) 573-0788

www.ahlbornco.com

What Public Health Experts Expect for COVID-19 in California This Winter

From Page 11

Long COVID is still a big concern

Both Pan and Wachter cited the lasting effects brought on by long COVID, many still largely unknown, as their chief concern if they were to become infected again. According to a survey conducted by the Census and CDC conducted this summer, as many as 1 in 5 infections in adults result in symptoms of long COVID, which are symptoms lasting three or more months after first contracting the virus.

“We’re still learning about long COVID. And to me, personally even, and for my own family, that is still what concerns me the most,” Pan said.

Pan noted that while there are some predictors about who will get lasting symptoms of COVID, there have been many people, including children, who had mild cases but experienced long COVID symptoms.

One fallacy Wachter sought to correct is the perception that people cannot get long COVID if they didn’t get it the first time they were infected. You can, he said, and if you did get long COVID the first time, you can get an even worse case.

“There is always a reason to try to avoid getting [COVID], even if you’ve had it multiple times before,” he said.

Boosters are key, especially for older and younger Californians

Both experts noted the relative sluggishness of vaccine uptake in California. According to the state dashboard, only 11.4% of Californians over 5 years

old have received the new bivalent booster, which targets both the original strain of the virus that causes COVID, and more recent subvariants.

Although the state’s rate of uptake is higher than the rest of the country, which is at 7.3%, Wachter said it’s still too low.

“Particularly if you’re at someone at higher risk over, let’s say 50, or have other medical illnesses and you have only gotten two vaccine shots a year ago, you are markedly under protected,” he said.

Wachter also pointed to misinformation as a cause for vaccine hesitancy.

“There will be thousands of deaths because elderly people have, for whatever reason, chosen not to stay up to date on their boosters, in part because of misinformation,” he said.

On the flip side, Pan said it’s important to get more children under the age of 5 vaccinated. Although the bivalent booster is not yet authorized for them, Pan says there has been low uptake in the COVID vaccine all together, which is important to prevent severe illness.

“It’s these sort of extremes of age that are at risk for more serious illness,” she said. “I want to emphasize to all the parents out there or grandparents, encourage your families to get your kids vaccinated. I’m speaking as a mom, as a pediatric infectious disease doctor and a public health official.”

As of Oct. 27, less than 6% of children under 5 years old had received their primary doses of vaccine.

(707) 230-2927 or 707-684-9756



**Remodels • New Construction
Decks • Kitchens
Bathrooms**

Kashia Construction, LLC

Jose Oropeza • General Manager

Kashiaconstruction.com Lic. # 1018509

CONSTRUCTION
GHILOTTI
Since • **COMPANY** • 1914

246 GHILOTTI AVENUE, SANTAROSA, CA 95407
 License #644515

**Residential • Commercial • Industrial
 SITE DEVELOPMENT**

Soil Stabilization • Lime Treatment • Grading
 Concrete • Asphalt • Parking Lots
 Curb & Gutter • Driveways • Private Roads

**Call now for a FREE estimate
 (707) 585-1221**

www.ghilotti.com

S	G
S	M

**SHAPIRO, GALVIN,
 SHAPIRO & MORAN**
 A PROFESSIONAL CORPORATION

REPRESENTING THE NORTH COAST BUILDERS EXCHANGE
 AND IT'S MEMBERS SINCE 1973

EMPHASIS IN

- ❖ CONSTRUCTION TRANSACTIONS & DISPUTES
- ❖ REAL ESTATE ❖ PERSONAL INJURY
- ❖ GENERAL BUSINESS COUNSELING
- ❖ EMPLOYMENT RELATED DISPUTES

EVERETT H. SHAPIRO (1927-2010)
DANIEL J. GALVIN III
 TAD S. SHAPIRO
 ADRIENNE M. MORAN
 REED J. MORAN

640 THIRD STREET, 2ND FLOOR, SANTA ROSA, CA 95404
 (707) 544-5858 ❖ FAX 544-6702
WWW.SHAPIROGALVINLAW.COM

Canyon Rock

SERVING THE REDWOOD EMPIRE



CRUSHED BLUE SHALE

3/4 CR • 1-1/2 CR • DRAINROCK • CLASS II BASE
 PIPE BEDDING & BACKFILL • BLUE & BROWN ROCK
 LIGHT & LARGE RIP-RAP • CONTROL DENSITY FILL (CDF)

We Recycle Concrete & Asphalt

**Open: Mon. – Fri. 7A.M. to 5P.M.
 Sat. 7A.M. to 12P.M.**

**Call for Delivery
 (707) 887-2634 or (707) 887-2207
 Fax: 887-9258**

7525 Hwy 116 (1/2 mile west of town), Forestville
www.canyonrockinc.com

The Genuine. The Original.
OVERHEAD DOOR



**Thank you for voting us
 BEST GARAGE DOOR COMPANY**
in Sonoma County

Visit our new location:

1805 Empire Industrial Court, Santa Rosa, CA 95403
 Showroom Open Monday - Friday 8am - 5pm
 Residential & Commercial Service, Installation, and Sales

License #281347
Ph: (707) 542-4949
www.overheaddoorsantarosa.com

The Genuine. The Original.
100 YEARS
— Since 1921 —

BEST
 The True Original
 Garage Door Company
 Sonoma County 2011

BEST
 The True Original
 Garage Door Company
 Sonoma County 2011

IDA
 International Door Association

BBB
 ACCREDITED
 BUSINESS



Capitol Connection Q&A for Contractors

By Shauna Krause
Capitol Services, Inc

Sometimes the difference in licensing is a ‘federal case’ in public works. Another contractor has ‘elected’ to replace the President! That isn’t always required, and while you can’t share a license between individuals, in most cases the same is also true for businesses. I wrap up with a ‘wait’ and see answer...

Q: I currently have an “A” General Engineering Contractors license in good standing, and I am curious to know if I can bid Private/Public Works (we have DIR number), and Federal Synthetic Turf installs without a “C-27” or “C-61/D-12”.

A: For public works projects it is always up to the awarding authority as to what type of license is required. A State Contractor’s License is not required for Federal work. For the Private work though, whether you need the specialty license depends on the scale/size of the turf installation. If it’s a large scale such as a sports field, that would fall under the “A” as “parks, playgrounds, and other recreational works”. If you are referring to smaller scale residential turf installations that does not require any special engineering skills, the most appropriate classification would be the “C-27” or “D-12”.

Q: Our President has left the company. Do we need to replace him within 90 days? We don’t have another President elected just yet.

A: No, it is not necessary to “replace” your President. You should however notify the CSLB of your President’s departure by filing a disassociation. Once you have elected a new President, you should then notify the CSLB within 90 days.

Q: We are creating a wholly owned subsidiary to serve as the Owner/Builder for one of our California projects. This is a common practice in the energy business. Do you know if our license for the parent company can be utilized by the subsidiary?

A: It cannot. Two separate entities cannot use the same license.

Q: I have a “C-10” Responsible Managing Officer (RMO) on my license currently. How long do I need to keep him associated with the business so I can get the license in my name without taking the test?

A: After five years, you can apply to replace him on the license and request to waive the exams.

While knowledge is power, knowing where to go for the answers is half the battle. Get expert assistance immediately when you call 866-443-0657, email info@cutredtape.com, or write us at Capitol Services, Inc., 3609 Bradshaw Rd, Ste H, #343, Sacramento, CA 95827. Search past columns at www.cutredtape.com.

**A Law Firm
BUILT
For Contractors**

- Contracts & Collections
- Business Formation & Licensing
- Litigation & Disputes
- Mechanics Lien & Bond Claims
- Employment & Workplace Safety

\$SmithDollar | (707) 522-1100

 hudson street design



WINDOWS **PLUMBING** **SKYLIGHTS**
WINDOW COVERINGS **FIXTURES**
CABINETRY **KITCHEN & BATH**
SERVICE **FINISH HARDWARE** **DESIGN**
REPAIRS **DOORS & MORE**



HudsonStreetDesign.com
434 Hudson Street | Healdsburg
707.431.3630



family of companies



PROFESSIONAL TOOLS, LUMBER & SUPPLIES

HealdsburgLumber.com
359 Hudson St. | Healdsburg
707.431.9663



GET YOUR SITE READY FOR WINTER AND STAY IN COMPLIANCE

Call 707-588-8677 or
 Email jon@nearylandscape.com
 for quote on following
 Erosion Control services:

Hydroseeding, Soil Stabilization,
 Straw Wattles, Erosion Blankets,
 Jute Mesh, Coir Netting or Silt Fencing



Neary Landscape Inc.
 PO Box 249
 Cotati, CA 94931
 707-588-8677 phone
 707-588-8674 fax

707 546-3444 707 836 9444



www.scheferradiant.com



SANDBORN
 Tree Service Inc.
 Since 1975

CHIP SANDBORN
 OWNER/PRESIDENT

PHONE (707) 823-9144 ISA CERTIFIED ARBORIST* #WE-0177A
 FAX (707) 823-1795 MEMBER OF WCISA - CCL #694407

119 MORRIS ST. SEBASTOPOL, CA 95472
 SANDBORNTREE.COM • SANDBORNTREE@GMAIL.COM

6 Tips to Help Prevent Slips, Trips and Falls

It's probably happened to most of us. That momentary lapse of attention, thinking about a personal problem or distraction by an activity that ends in a slip, trip or fall. A stumble down a stairway. A trip over an uneven surface. Slipping on the ice. It can lead to a variety of regrettable events ranging from a simple bruised shin to an extremely serious injury. It's just one of a number of conditions and situations that set the stage for slips, trips and falls in the workplace.

According to the U.S. Department of Labor, slips, trips and falls make up the majority of general industry accidents, which account for:

- 15% of all accidental deaths per year, the second-leading cause behind motor vehicles
- About 25% of all reported injury claims per fiscal year
- More than 95 million lost work days per year — about 65% of all work days lost

In general, slips and trips occur due to a loss of traction between the shoe and the walking surface or an inadvertent contact with a fixed or moveable object which may lead to a fall. There are a variety of situations that may cause slips, trips and falls:

- Wet or greasy floors
- Dry floors with wood dust or powder
- Uneven walking surfaces
- Polished or freshly waxed floors
- Loose flooring, carpeting or mats
- Transition from one floor type to another
- Missing or uneven floor tiles and bricks
- Damaged or irregular steps; no handrails
- Sloped walking surfaces
- Shoes with wet, muddy, greasy or oily soles
- Clutter
- Electrical cords or cables
- Open desk or file cabinet drawers
- Damaged ladder steps

More on Page 17

We Provide a Strong Foundation for Your Construction Business



PISENTI & BRINKER LLP
Certified Public Accountants & Advisors

Local Partnership. Global Solutions.

Audit & Assurance · Consulting · Tax

Serving the Construction Industry **Since 1965**



Santa Rosa 707.542.3343

Petaluma 707.762.9900

Napa 707.224.4097

pblip.com

Integrated Client Accounting Services:

Bookkeeping Support | Controller Services | Tax Compliance

6 Tips to Help Prevent Slips, Trips and Falls

From Page 16

Here are six guidelines to help you create a safer working environment for you and your employees.

1. Create Good Housekeeping Practices

Safety and housekeeping go hand in hand. If your facility's housekeeping habits are poor, the result may be a higher incidence of employee injuries, ever-increasing insurance costs and regulatory citations.

Proper housekeeping is a routine. It is an ongoing procedure that is simply done as a part of each worker's daily performance. To create an effective housekeeping program, there are three simple steps to get you started:

- Plan ahead — Know what needs to be done, who's going to do it and what the particular work area should look like when you are done.
- Assign responsibilities — It may be necessary to assign a specific person or group of workers to clean up, although personal responsibility for cleaning up after oneself is preferred.
- Implement a program — Establish housekeeping procedures as a part of the daily routine.

2. Reduce Wet or Slippery Surfaces

Walking surfaces account for a significant portion of injuries reported by state agencies.

Traction on outdoor surfaces can change considerably when weather conditions change. Those conditions can then affect indoor surfaces as moisture is tracked in by pedestrian traffic. Traction control procedures should be constantly monitored for their effectiveness:

- Keep parking lots and sidewalks clean and in good repair condition.
- Use adhesive striping material or anti-skid paint whenever possible.
- Use moisture-absorbent mats with beveled edges in entrance areas. Make sure they have backing material that will not slide on the floor.
- Display "Wet Floor" signs as needed.
- Use anti-skid adhesive tape in troublesome areas.
- Clean up spills immediately. Create a procedure for taking the appropriate action when someone causes or comes across a food or drink spill.
- Use proper area rugs or mats for food preparation areas.

3. Avoid Creating Obstacles in Aisles and Walkways

Injuries can also result from trips caused by obstacles, clutter, materials and equipment in aisles, corridors, entranceways and stairwells. Proper housekeeping in work and traffic areas is still the most effective control measure in avoiding the proliferation of these types of hazards. This means having policies or procedures in place and allowing time for cleaning the area, especially where scrap material or waste is a byproduct of the work operation:

- Keep all work areas, passageways, storerooms and service areas clean and orderly.
- Avoid stringing cords, cables or air hoses across hallways or in any designated aisle.
- Conduct periodic inspections for slip and trip hazards.

4. Create and Maintain Proper Lighting

Poor lighting in the workplace is associated with an increase in accidents.

- Use proper illumination in walkways, staircases, ramps, hallways, basements, construction areas and dock areas.
- Keep work areas well lit and clean.
- Upon entering a darkened room, always turn on the light first.

5. Wear Proper Shoes


The shoes we wear can play a big part in preventing falls and are a critical component of PPE. The slickness of the soles and the type of heels worn need to be evaluated to avoid slips, trips and falls. Shoelaces need to be tied correctly. Whenever a fall-related injury is investigated, the footwear needs to be evaluated to see if it contributed to the incident. Employees are expected to wear footwear appropriate for the duties of their work task.

6. Control Individual Behavior

This condition is the toughest to control. It's human nature to let our guard down temporarily and be distracted by random thoughts or doing multiple activities. Being in a hurry will result in walking too fast or running, which increases the chances of a slip, trip or fall. Taking shortcuts, not watching where one is going, using a cell phone, carrying materials which obstruct the vision, wearing sunglasses in low-light areas, not using designated walkways and speed are common factors in many on-the-job injuries.

It's ultimately up to each individual to plan, stay alert and pay attention.

DUSTIN KIEFER
FOUNDER & OWNER




✉ DUSTIN@KIEFER-ELECTRIC.COM
☎ 707.385.9754

“Reliable experts, you can count on!”

📍 PO BOX 9542
Santa Rosa, CA
95405

🌐 Kiefer-Electric.com



LARGE DISCOUNT TO ALL NCBE MEMBERS

GENERATOR SALES, SERVICE & INSTALLATION



Did you know that your back-up generator requires an annual maintenance check?

Have you performed your annual generator maintenance, yet?

Maintain your generator,
Schedule service now.

Premier Generac authorized dealer and warranty center for Sonoma County

- Generator Sales, Service, and Installation
 - Certified technicians • 5-star Generac dealer
 - Local references available • Family owned and operated
- California Licensed General Contractor since 1984 #459028



UnitedGenerator.com
707-332-0703
Call or text

**CALL OR TEXT MIKE TO LEARN ABOUT DEALS
FOR NCBE MEMBERS**

Healdsburg

Sotheby's

INTERNATIONAL REALTY

DEVELOPMENT OPPORTUNITIES

21020 GEYSERVILLE AVE | PRIME VACANT CML LOT
\$995,000 | MIXED USE ZONING | GROUND FLOOR
RETAIL | UPPER FLOOR RESIDENTIAL APARTMENTS
6,750± SF | PLANS AVAILABLE

KELLY ROAD, CLOVERDALE | 17.5± MILE ROAD
\$1,195,000 | GATEWAY TO THE SONOMA COAST FROM
ROCKPILE RD, HEALDSBURG | 177± AC | RECREATIONAL
AND DEVELOPMENT OPPORTUNITIES

2150 BIG RIDGE RD, HEALDSBURG | \$959,000
80± AC OF REDWOOD/DOUGLAS FIR FOREST PANORAMIC
VIEWS TO NORTH/EAST | EXECUTIVE OR COMPOUND/
RECREATION/GOOD WATER

OVER 100 YEARS COMBINED EXPERIENCE IN
HEALDSBURG BUSINESS | WE KNOW THE TERRITORY

Eric Ziedrich
CalDRE 02067080
+1 707 495 0118

Bob Pennypacker
CalDRE 01846725
+1 707 799 6032

Eric Drew
CalDRE 00464329
+1 707 217 9415

- Hybrid Homes
- Modular Homes
- Mobile Homes
- Manufactured Homes
- Accessory Dwellings (ADU's)
- Granny Units and Guest Cottages
- Replace Homes in Mobile Home Parks



4591 Sonoma Highway
Santa Rosa, CA 95409

707-527-3838

info@hybridprefabhomes.com



Ready to Learn What's New for 2022?

Sign up for these Energy Code Ace classes today!

These classes summarize the new and revised requirements in the 2022 California Energy Code (Title 24, Part 6) for envelope, mechanical and electrical features in Nonresidential, Single-family and Multifamily buildings. You'll also learn about no-cost informational and training resources that provide more in-depth information on the Energy Code.

Join us November 29 to begin learning what the 2022 code means to you and your customers. Register for 1, 2 or all 3 classes!

DATE: November 29, 2022

LOCATION: North Coast Builders Exchange
1030 Apollo Way Santa Rosa, CA 95407

TIMES: 8:30am – 10:00am: 

2022 Title 24, Part 6 – What's New: Envelope Features
[Register](#)

 10:30am – 12:00pm:

2022 Title 24, Part 6 – What's New: Mechanical Features
[Register](#)

12:00pm – 1:00pm Lunch Break – *Lunch will be provided for attendees*

1:00pm – 2:30pm: 

2022 Title 24, Part 6 – What's New: Electrical Features
[Register](#)

[Register for the full day of all 3 classes!](#)

COST: None!

INSTRUCTOR: Gina Rodda



Gina Rodda is currently the Principal/Owner of Gabel Associates, LLC in Castro Valley, California, and has been in the energy modeling field since 1991. Gina is the instructor of several dozen full day Energy Code Ace trainings on the Residential and Nonresidential Title 24, Part 6 Building Energy Efficiency Standards for building department staff, energy consultants, engineers, and architects.

She is also a Certified Energy Analyst (CEA), LEED Accredited Professional (AP) and Title 24 energy analyst performing a wide range of responsibilities in both residential and nonresidential construction pertaining to compliance standards and energy modeling and is a respected subject matter expert informing the statewide code development process.

These classes
are provided
at no cost by
Energy Code Ace.




Will Jenkel
Sales

211 Cresco Ct. Santa Rosa, CA 95407
Bus. (707) 586-1790 Mobile (707) 494-0824 Fax (707) 586-1745
email: wjenkel@gartontractor.com www.garton-tractor.com

BUILDERS INCENTIVE PROGRAM



**EARN UP TO
\$5,000
A YEAR***

To help support the construction of propane homes in Sonoma County, Blue Star Gas is offering builders and re-modelers up to \$1,000 for each home they build with clean burning, energy efficient propane appliances. Construction professionals are eligible for up to five homes per year, for a total of up to \$5,000!

It's a win-win for you and your customers, who will enjoy the improved energy efficiency, performance, and comfort of a propane home when compared with all-electric counterpart.

FOR COMPLETE DETAILS CONTACT

Blue Star Gas- Santa Rosa Co.

Victoria King

(707) 546-1400

vking@bluestargas.com



BLUE STAR GAS
Propane Sales & Service



PROPANE
CLEAN AMERICAN ENERGY™

* Terms and conditions apply, see store for complete details.

NOR-CAL


RECYCLED ROCK AND AGGREGATES, INC.

CONCRETE SAND • CONCRETE MIX
BLOW SAND • 3/4" & 1/2" AGG
PEA GRAVEL • ROAD BASE
DRAIN ROCK • RED SAND
FIBERMESH • ADMIXTURES
MICRO AIR • COLORED CONCRETE


REDIMIX

**LOCALLY OWNED
AND OPERATED**

UKIAH
707.462.9605



STATE CERTIFIED PLANT, STATE CERTIFIED SCALES, STATE SPEC. AGGREGATES



JOHN'S FORMICA SHOP, INC.

Owner: John Deas, Jr.

Lic. No: 521041

Phone: 707.544.8585 Fax: 707.544.3620

**Custom Cabinets, Counter Tops,
Showers & Tub Surrounds**

Showroom & Shop: 2439 Piner Rd., Santa Rosa, CA 95403
E-Mail: johnsformica@aol.com



HOME CENTER & LUMBER CO.
MENDO MILL

WINDOWS • PAINT • KITCHENS • LUMBER • GARDEN
POWER TOOLS • PLUMBING • ELECTRICAL & MORE

UKIAH 1870 North State Street 707.462.8806	WILLITS 305 East Commercial 707.459.4631	CLEARLAKE 5255 Old Hwy 53 707.994.1014
FORT BRAGG 125 South Main 707.964.0215	LAKEPORT 2465 South Main Street 707.263.8400	



**R & S ERECTION of
SANTA ROSA, Inc.**
3531 SANTA ROSA AVE.
SANTA ROSA, CA 94507
FAX: (707) 585.8337

Monday - Friday
8:00 a.m. - 4:30 p.m.
CONT. LIC. #293730

**SALES, SERVICE & INSTALLATION
COMMERCIAL & RESIDENTIAL DOORS & MOTORS**

rsdoors-santarosa.com
rsdoors-santarosa@sbcglobal.net

24 / 7 Emergency Service

(707) 585.0892



STILLPOINT, INC

Site Development
We provide Fire Debris Cleanup

Carl Burchfiel | President

office 707-526-1300 | mobile 707-575-7717
P.O. Box 14174, Santa Rosa, CA 95402
office@stillpointengineering.com | stillpointengineering.com
Lic. #648027

Quarry Rock
P. O. Box 1566
Willits, CA 95490

Two Locations
Willits
Hopland

NORTHERN AGGREGATES, INC.

Rip Rap • Base • Road Material
Quarry (707) 459-0615 • Office (877) 459-0615

BRODERICK

GENERAL ENGINEERING

21750 Eighth Street East, Suite B, Sonoma, CA 95476
(707) 996-7809 • Fax (707) 996-2028 • Lic. #750809

<https://broderickge.com>

Grading - Excavation - Underground Utilities - Rock Crushing
Waterworks - Septic Systems - Erosion Control - Paving - Chip Seal



**Coast Building
ProductsSM**

**INSULATION • REMOVAL • FIRE PROOFING
COMMERCIAL • RESIDENTIAL**

(707) 575-5739

WWW.AMERICANATIONALINSULATION.COM
160 TODD RD. STE 200 SANTA ROSA CA 95401 LIC#465440

BAY CITIES FIRE SUPPRESSION, INC.
Professional Fire Sprinkler Installations/Design
Residential-Industrial-Commercial
www.baycitiesfiresuppressioninc.com

John Hess - President
Office: 707-978-2598
Cell: 707-495-5869
Fax: 707-579-8920
License C16,B #1023490
bcfsinc@att.net



Classified Ad Listings – Free to NCBE members

HELP WANTED

PROBATION WORK CREW SUPERVISOR - EXTRA-HELP

\$35.44 - \$43.07/Hourly*

For more information, including minimum qualifications, & to apply, visit www.yourpath2sonomacounty.org or call 707-565-2331. EOE Apply Now

ESTIMATOR/PROJECT MANAGER

M3 Integrated Services, Inc. is looking for an experienced public works estimator/project manager (min. 5 yrs. experience). Experience should include general engineering and building. Must have strong communication and computer skills. High growth potential. Competitive pay and benefits. If interested e-mail: matt@m3-co.com

FOR SALE

2006 FORD F 250 DIESEL

2006 Ford F 250 diesel: Supercab 4WD longbed with manual transmission. Very clean, one owner truck. Has titan lumber rack and side tool boxes. 16k or make offer. Jim @ 707 975 4549, jawbohn@sbcglobal.net

Classified Ads are FREE to NCBE Members

Email a 35+/-word, job offer, or a link to your company job board. Ads must be construction-related and text-only. Please include the job title & a contact person. Email your ad to deb@ncbeonline.com, by Wednesday at 5 P.M. and we'll get your ad in *Building News*.

Please note: Residential property listings may not be included in the free classified ads. We do offer our members very low ad rates for this purpose, see your weekly Building News. You'll find the ad rate/size sheet on the page following the classified ad section.

707-527-6407
Fax 707-527-6197
info@alphafiresystems.com



ALPHA
FIRE SUPPRESSION SYSTEMS, INC.
Engineering • Installation • Inspections
LIC # 670313
2391 Circadian Way • Santa Rosa, CA 95407

Chet Laws
Director of Business Development,
North Bay
claws@iwins.com
5401 Old Redwood Hwy, Suite 105
Petaluma, CA 94954
DIRECT: (707) 657-4505
TOLL FREE: (877) 901-3742
FAX: (707) 239-7885
CELL: (707) 484-6847
Lic# 0801094



INTERWEST
INSURANCE SERVICES, LLC
Offices throughout California
www.iwins.com

Building News Advertising Rates

Display Ad

Ad Size	Ad Type	Weekly NCBE Member	Weekly Limited-Member*	Quarterly NCBE Member	Quarterly Limited-Member*
3.5" x 2"	Horizontal Business card	\$15	\$31	\$195	\$403
3.5" x 4"	Horizontal Front/Back Business card	\$30	\$61	\$390	\$806
2" x 3.5"	Vertical Business card	\$15	\$31	\$195	\$403
4" x 3.5"	Vertical Front/Back Business card	\$30	\$61	\$390	\$806
3.5" x 5"	1/4 Page Vertical	\$46	\$92	\$598	\$1,196
7.5" x 5"	1/2 Page Horizontal	\$92	\$185	\$1,196	\$2,405
7.5" x 10"	Full Page Vertical	\$185	\$370	\$2,405	\$4,810

Sub Bid Ad

3" x 3.5"	Sub-Bid (E.O.E. ad)	\$24	\$48
-----------	---------------------	------	------

Classified Ad (NCBE Members only)

35 words	Text only (3 week maximum)	FREE	Not available
----------	----------------------------	------	---------------

Ad Deadline – We need to receive your ad by Wednesday 5 P.M. to be included in the next publication.

Ad Requirements – A full-size, high-resolution (200ppi) pdf or jpeg file. We can resize your ad for you, if needed.

Building News is a weekly publication., emailed to its members on Monday morning.
For any questions, please email [Deb Rourke](#) at NCBE, or call (707) 542-9502.

* **Limited-Member ad rates** apply to all NCBE Limited Memberships, which include Worker Comp, Student & SS Limited Memberships. All advertising for Limited-memberships must be paid in advance.

Non-Members - May not advertise in any NCBE Member publications, including *Building News*.

Sonoma Valley Unified School District

17850 Railroad Avenue,
Sonoma, CA 95476
(707) 935-6000
www.sonomaschools.org

CONTRACTOR'S REGISTRATION APPLICATION

CALIFORNIA UNIFORM PUBLIC CONSTRUCTION COST ACCOUNTING INFORMATION BIDDER'S PRICES
The Contractor's bid is to be included in the Sonoma Valley Unified School District List of Qualified Contractors
in response to Notices Inviting Informal Bids for CUPCA Projects under \$200,000.

Name of Company: _____

Contact Name: _____ Title: _____

Address: _____ City: _____ State: _____ Zip Code: _____

Telephone: _____ Fax: _____ E-mail: _____

Contractor shall disclose all licenses held by the company and its current CDR registration number:

CA Contractor's License No(s): _____ Date of Issue: _____ Date of Expiration: _____

Dept. of Ind. Relations (DIR) No.: _____ Date of Expiration: _____

All License(s) Held (A, B and/or specialty licenses) _____

Specialty Licenses

- | | |
|--|--|
| <input type="checkbox"/> C-2 Insulation and Acoustical | <input type="checkbox"/> C-32 Parking and Highway Improvement |
| <input type="checkbox"/> C-4 Boiler, Hot Water heating and Steam Fitting | <input type="checkbox"/> C-33 Painting and Decorating |
| <input type="checkbox"/> C-5 Framing and Rough Carpentry | <input type="checkbox"/> C-34 Pipeline |
| <input type="checkbox"/> C-6 Cabinet, Millwork and Finish Carpentry | <input type="checkbox"/> C-35 Lathing and Plastering |
| <input type="checkbox"/> C-7 Low Voltage Systems | <input type="checkbox"/> C-36 Plumbing |
| <input type="checkbox"/> C-8 Concrete | <input type="checkbox"/> C-38 Refrigeration |
| <input type="checkbox"/> C-9 Drywall | <input type="checkbox"/> C-39 Roofing |
| <input type="checkbox"/> C-10 Electrical | <input type="checkbox"/> C-43 Sanitation System |
| <input type="checkbox"/> C-11 Elevator | <input type="checkbox"/> C-45 Electrical Sign |
| <input type="checkbox"/> C-12 Earthwork and Paving | <input type="checkbox"/> C-46 Solar |
| <input type="checkbox"/> C-13 Fencing | <input type="checkbox"/> C-47 General Manufactured Housing |
| <input type="checkbox"/> C-15 Flooring and Floor Covering | <input type="checkbox"/> C-50 Reinforcing Steel |
| <input type="checkbox"/> C-16 Fire Protection | <input type="checkbox"/> C-51 Structural Steel |
| <input type="checkbox"/> C-17 Glazing | <input type="checkbox"/> C-53 Swimming Pool |
| <input type="checkbox"/> C-20 Warm-Air Heating, Ventilation and Air Conditioning | <input type="checkbox"/> C-54 Ceramic and Mosaic Tile |
| <input type="checkbox"/> C-21 Building Moving/Demolition | <input type="checkbox"/> C-55 Water Conditioning |
| <input type="checkbox"/> C-23 Ornamental Metal | <input type="checkbox"/> C-57 Water Well Drilling |
| <input type="checkbox"/> C-27 Landscaping | <input type="checkbox"/> C-60 Welding |
| <input type="checkbox"/> C-28 Lock and Security Equipment | <input type="checkbox"/> C-61 Limited Specialty |
| <input type="checkbox"/> C-29 Masonry | <input type="checkbox"/> ASB Asbestos Certification |
| <input type="checkbox"/> C-31 Construction Zone Traffic Control | <input type="checkbox"/> HAZ Hazardous Substance Removal Certification |

I certify to the best of my knowledge that the information provided above is true and complete as of this date. I further certify that my firm is properly licensed and skilled to perform the above described classes of work and is able to provide the required payment and performance bonds and insurance to perform the work. My company shall comply with all city, state, and federal requirements.

Submitted by: _____ Title: _____ Date: _____

Submit Completed Form To:

Counterpoint Construction Services, Inc.
Attn: Counterpoint Construction
Email: info@counterpointcs.com

Roseland School District

1691 Burbank Ave.
Santa Rosa, CA 95407
(707) 545-0102
www.roselandsd.org

CONTRACTOR'S REGISTRATION APPLICATION

CALIFORNIA UNIFORM PUBLIC CONSTRUCTION COST ACCOUNTING INFORMAL BIDDING PROCESSES
The Contractor listed herein requests to be included on the Roseland School District List of Qualified Contractors
to receive Notices Inviting Informal Bids for CUPCIPA Projects under \$200,000.

Name of Company: _____

Contact Name: _____ Title: _____

Address: _____ City: _____ State: _____ Zip Code: _____

Telephone: _____ Fax: _____ E-mail: _____

Contractor shall disclose all licenses held by the company and its current DIR registration number:

CA Contractor's License No(s): _____ Date of Issue: _____ Date of Expiration: _____

Dept. of Ind. Relations (DIR) No.: _____ Date of Expiration: _____

All License(s) Held (A, B and/or specialty licenses) _____

Specialty Licenses

- | | |
|--|--|
| <input type="checkbox"/> C-2 Insulation and Acoustical | <input type="checkbox"/> C-32 Parking and Highway Improvement |
| <input type="checkbox"/> C-4 Boiler, Hot Water heating and Steam Fitting | <input type="checkbox"/> C-33 Painting and Decorating |
| <input type="checkbox"/> C-5 Framing and Rough Carpentry | <input type="checkbox"/> C-34 Pipeline |
| <input type="checkbox"/> C-6 Cabinet, Millwork and Finish Carpentry | <input type="checkbox"/> C-35 Lathing and Plastering |
| <input type="checkbox"/> C-7 Low Voltage Systems | <input type="checkbox"/> C-36 Plumbing |
| <input type="checkbox"/> C-8 Concrete | <input type="checkbox"/> C-38 Refrigeration |
| <input type="checkbox"/> C-9 Drywall | <input type="checkbox"/> C-39 Roofing |
| <input type="checkbox"/> C-10 Electrical | <input type="checkbox"/> C-43 Sanitation System |
| <input type="checkbox"/> C-11 Elevator | <input type="checkbox"/> C-45 Electrical Sign |
| <input type="checkbox"/> C-12 Earthwork and Paving | <input type="checkbox"/> C-46 Solar |
| <input type="checkbox"/> C-13 Fencing | <input type="checkbox"/> C-47 General Manufactured Housing |
| <input type="checkbox"/> C-15 Flooring and Floor Covering | <input type="checkbox"/> C-50 Reinforcing Steel |
| <input type="checkbox"/> C-16 Fire Protection | <input type="checkbox"/> C-51 Structural Steel |
| <input type="checkbox"/> C-17 Glazing | <input type="checkbox"/> C-53 Swimming Pool |
| <input type="checkbox"/> C-20 Warm-Air Heating, Ventilation and Air Conditioning | <input type="checkbox"/> C-54 Ceramic and Mosaic Tile |
| <input type="checkbox"/> C-21 Building Moving/Demolition | <input type="checkbox"/> C-55 Water Conditioning |
| <input type="checkbox"/> C-23 Ornamental Metal | <input type="checkbox"/> C-57 Water Well Drilling |
| <input type="checkbox"/> C-27 Landscaping | <input type="checkbox"/> C-60 Welding |
| <input type="checkbox"/> C-28 Lock and Security Equipment | <input type="checkbox"/> C-61 Limited Specialty |
| <input type="checkbox"/> C-29 Masonry | <input type="checkbox"/> ASB Asbestos Certification |
| <input type="checkbox"/> C-31 Construction Zone Traffic Control | <input type="checkbox"/> HAZ Hazardous Substance Removal Certification |

I certify to the best of my knowledge that the information provided above is true and complete as of this date. I further certify that my firm is properly licensed and skilled to perform the above described classes of work and is able to provide the required payment and performance bonds and insurance to perform the work. My company shall comply with all city, state, and federal requirements.

Submitted by: _____ Title: _____ Date: _____

Email Completed Form To:

Counterpoint Construction Services, Inc.
Attn: Counterpoint Construction
Email: info@counterpointcs.com
On behalf of the: Roseland School District

Ross School District

9 Lagunitas Road, P.O. Box 1058
 Ross, CA 94957
 (415) 457-2705
 www.rossbears.org

CONTRACTOR'S REGISTRATION APPLICATION

CALIFORNIA UNIFORM PUBLIC CONSTRUCTION COST ACCOUNTING INFORMATION BIDDER'S PRICE
 The Contractor listed below requests to be included on the Ross School District List of Qualified Contractors
 in response to Notices Inviting Informal Bids for CUPCAA Projects under \$200,000.

Name of Company: _____

Contact Name: _____ Title: _____

Address: _____ City: _____ State: _____ Zip Code: _____

Telephone: _____ Fax: _____ E-mail: _____

Contractor shall disclose all licenses held by the company and its current CDR registration number:

CA Contractor's License No(s): _____ Date of Issue: _____ Date of Expiration: _____

Dept. of Ind. Relations (DIR) No.: _____ Date of Expiration: _____

All License(s) Held (A, B and/or specialty licenses) _____

Specialty Licenses

- | | |
|--|--|
| <input type="checkbox"/> C-2 Insulation and Acoustical | <input type="checkbox"/> C-32 Parking and Highway Improvement |
| <input type="checkbox"/> C-4 Boiler, Hot Water heating and Steam Fitting | <input type="checkbox"/> C-33 Painting and Decorating |
| <input type="checkbox"/> C-5 Framing and Rough Carpentry | <input type="checkbox"/> C-34 Pipeline |
| <input type="checkbox"/> C-6 Cabinet, Millwork and Finish Carpentry | <input type="checkbox"/> C-35 Lathering and Plastering |
| <input type="checkbox"/> C-7 Low Voltage Systems | <input type="checkbox"/> C-36 Plumbing |
| <input type="checkbox"/> C-8 Concrete | <input type="checkbox"/> C-38 Refrigeration |
| <input type="checkbox"/> C-9 Drywall | <input type="checkbox"/> C-39 Roofing |
| <input type="checkbox"/> C-10 Electrical | <input type="checkbox"/> C-43 Sanitation System |
| <input type="checkbox"/> C-11 Elevator | <input type="checkbox"/> C-45 Electrical Sign |
| <input type="checkbox"/> C-12 Earthwork and Paving | <input type="checkbox"/> C-46 Solar |
| <input type="checkbox"/> C-13 Fencing | <input type="checkbox"/> C-47 General Manufactured Housing |
| <input type="checkbox"/> C-15 Flooring and Floor Covering | <input type="checkbox"/> C-50 Reinforcing Steel |
| <input type="checkbox"/> C-16 Fire Protection | <input type="checkbox"/> C-51 Structural Steel |
| <input type="checkbox"/> C-17 Glazing | <input type="checkbox"/> C-53 Swimming Pool |
| <input type="checkbox"/> C-20 Warm-Air Heating, Ventilation and Air Conditioning | <input type="checkbox"/> C-54 Ceramic and Mosaic Tile |
| <input type="checkbox"/> C-21 Building Moving/Demolition | <input type="checkbox"/> C-55 Water Conditioning |
| <input type="checkbox"/> C-23 Ornamental Metal | <input type="checkbox"/> C-57 Water Well Drilling |
| <input type="checkbox"/> C-27 Landscaping | <input type="checkbox"/> C-60 Welding |
| <input type="checkbox"/> C-28 Lock and Security Equipment | <input type="checkbox"/> C-61 Limited Specialty |
| <input type="checkbox"/> C-29 Masonry | <input type="checkbox"/> ASB Asbestos Certification |
| <input type="checkbox"/> C-31 Construction Zone Traffic Control | <input type="checkbox"/> HAZ Hazardous Substance Removal Certification |

I certify to the best of my knowledge that the information provided above is true and complete as of this date. I further certify that my firm is properly licensed and skilled to perform the above described classes of work and is able to provide the required payment and performance bonds and insurance to perform the work. My company shall comply with all city, state, and federal requirements.

Submitted by: _____ Title: _____ Date: _____

Submit Completed Form To:

Counterpoint Construction Services, Inc.
 Attn: Counterpoint Construction
 Email: info@counterpointcs.com

Gravenstein Union School District

725 Bloomfield Road
Sebastopol, CA 95472
(707) 823-7008
www.grav.k12.ca.us

CONTRACTOR'S REGISTRATION APPLICATION

CALIFORNIA UNIFORM PUBLIC CONSTRUCTION COST ACCOUNTING INFORMATION BIDDING PROCESS
The Contractor takes notice requests to be included on the Gravenstein Union School District List of Qualified Contractors to receive Notices Inviting Informal Bids for CUPCAA Projects under \$200,000.

Name of Company: _____

Contact Name: _____ Title: _____

Address: _____ City: _____ State: _____ Zip Code: _____

Telephone: _____ Fax: _____ E-mail: _____

Contractor shall disclose all licenses held by the company and its current DIR registration number:

CA Contractor's License No(s): _____ Date of Issue: _____ Date of Expiration: _____

Dept. of Ind. Relations (DIR) No.: _____ Date of Expiration: _____

All License(s) Held (A, B and/or specialty licenses) _____

Specialty Licenses

- | | |
|--|--|
| <input type="checkbox"/> C-2 Insulation and Acoustical | <input type="checkbox"/> C-32 Parking and Highway Improvement |
| <input type="checkbox"/> C-4 Boiler, Hot Water heating and Steam Fitting | <input type="checkbox"/> C-33 Painting and Decorating |
| <input type="checkbox"/> C-5 Framing and Rough Carpentry | <input type="checkbox"/> C-34 Pipeline |
| <input type="checkbox"/> C-6 Cabinet, Millwork and Finish Carpentry | <input type="checkbox"/> C-35 Lathing and Plastering |
| <input type="checkbox"/> C-7 Low Voltage Systems | <input type="checkbox"/> C-36 Plumbing |
| <input type="checkbox"/> C-8 Concrete | <input type="checkbox"/> C-38 Refrigeration |
| <input type="checkbox"/> C-9 Drywall | <input type="checkbox"/> C-39 Roofing |
| <input type="checkbox"/> C-10 Electrical | <input type="checkbox"/> C-43 Sanitation System |
| <input type="checkbox"/> C-11 Elevator | <input type="checkbox"/> C-45 Electrical Sign |
| <input type="checkbox"/> C-12 Earthwork and Paving | <input type="checkbox"/> C-46 Solar |
| <input type="checkbox"/> C-13 Fencing | <input type="checkbox"/> C-47 General Manufactured Housing |
| <input type="checkbox"/> C-15 Flooring and Floor Covering | <input type="checkbox"/> C-50 Reinforcing Steel |
| <input type="checkbox"/> C-16 Fire Protection | <input type="checkbox"/> C-51 Structural Steel |
| <input type="checkbox"/> C-17 Glazing | <input type="checkbox"/> C-53 Swimming Pool |
| <input type="checkbox"/> C-20 Warm-Air Heating, Ventilation and Air Conditioning | <input type="checkbox"/> C-54 Ceramic and Mosaic Tile |
| <input type="checkbox"/> C-21 Building Moving/Demolition | <input type="checkbox"/> C-55 Water Conditioning |
| <input type="checkbox"/> C-23 Ornamental Metal | <input type="checkbox"/> C-57 Water Well Drilling |
| <input type="checkbox"/> C-27 Landscaping | <input type="checkbox"/> C-60 Welding |
| <input type="checkbox"/> C-28 Lock and Security Equipment | <input type="checkbox"/> C-61 Limited Specialty |
| <input type="checkbox"/> C-29 Masonry | <input type="checkbox"/> ASB Asbestos Certification |
| <input type="checkbox"/> C-31 Construction Zone Traffic Control | <input type="checkbox"/> HAZ Hazardous Substance Removal Certification |

I certify to the best of my knowledge that the information provided above is true and complete as of this date. I further certify that my firm is properly licensed and skilled to perform the above-described classes of work and is able to provide the required payment and performance bonds and insurance to perform the work. My company shall comply with all city, state, and federal requirements.

Submitted by: _____ Title: _____ Date: _____

Email Completed Form To:

Counterpoint Construction Services, Inc.

Attn: Counterpoint Construction

Email: info@counterpointcs.com

On behalf of the: Gravenstein Union School District

Roseland Charter School

1691 Burbank Ave.
Santa Rosa, CA 95407
(707) 545-0102
www.roselandsd.org

CONTRACTOR'S REGISTRATION APPLICATION

CALIFORNIA UNIFORM PUBLIC CONSTRUCTION COST ACCOUNTING INFORMAL BIDDING PROCESS
The Contractor listed below requests to be included on the **Roseland Charter School** List of Qualified Contractors
to receive Notices Inviting Informal Bids for CUPCCAA Projects under \$200,000.

Name of Company: _____

Contact Name: _____ Title: _____

Address: _____ City: _____ State: _____ Zip Code: _____

Telephone: _____ Fax: _____ E-mail: _____

Contractor shall disclose all licenses held by the company and its current DIR registration number:

CA Contractor's License No(s): _____ . Date of Issue: _____ . Date of Expiration: _____ .

Dept. of Ind. Relations (DIR) No.: _____ Date of Expiration: _____ .

All License(s) Held (A, B and/or specialty licenses) _____

Specialty Licenses

- | | |
|--|--|
| <input type="checkbox"/> C-2 Insulation and Acoustical | <input type="checkbox"/> C-32 Parking and Highway Improvement |
| <input type="checkbox"/> C-4 Boiler, Hot Water heating and Steam Fitting | <input type="checkbox"/> C-33 Painting and Decorating |
| <input type="checkbox"/> C-5 Framing and Rough Carpentry | <input type="checkbox"/> C-34 Pipeline |
| <input type="checkbox"/> C-6 Cabinet, Millwork and Finish Carpentry | <input type="checkbox"/> C-35 Lathing and Plastering |
| <input type="checkbox"/> C-7 Low Voltage Systems | <input type="checkbox"/> C-36 Plumbing |
| <input type="checkbox"/> C-8 Concrete | <input type="checkbox"/> C-38 Refrigeration |
| <input type="checkbox"/> C-9 Drywall | <input type="checkbox"/> C-39 Roofing |
| <input type="checkbox"/> C-10 Electrical | <input type="checkbox"/> C-43 Sanitation System |
| <input type="checkbox"/> C-11 Elevator | <input type="checkbox"/> C-45 Electrical Sign |
| <input type="checkbox"/> C-12 Earthwork and Paving | <input type="checkbox"/> C-46 Solar |
| <input type="checkbox"/> C-13 Fencing | <input type="checkbox"/> C-47 General Manufactured Housing |
| <input type="checkbox"/> C-15 Flooring and Floor Covering | <input type="checkbox"/> C-50 Reinforcing Steel |
| <input type="checkbox"/> C-16 Fire Protection | <input type="checkbox"/> C-51 Structural Steel |
| <input type="checkbox"/> C-17 Glazing | <input type="checkbox"/> C-53 Swimming Pool |
| <input type="checkbox"/> C-20 Warm-Air Heating, Ventilation and Air Conditioning | <input type="checkbox"/> C-54 Ceramic and Mosaic Tile |
| <input type="checkbox"/> C-21 Building Moving/Demolition | <input type="checkbox"/> C-55 Water Conditioning |
| <input type="checkbox"/> C-23 Ornamental Metal | <input type="checkbox"/> C-57 Water Well Drilling |
| <input type="checkbox"/> C-27 Landscaping | <input type="checkbox"/> C-60 Welding |
| <input type="checkbox"/> C-28 Lock and Security Equipment | <input type="checkbox"/> C-61 Limited Specialty |
| <input type="checkbox"/> C-29 Masonry | <input type="checkbox"/> ASB Asbestos Certification |
| <input type="checkbox"/> C-31 Construction Zone Traffic Control | <input type="checkbox"/> HAZ Hazardous Substance Removal Certification |

I certify to the best of my knowledge that the information provided above is true and complete as of this date. I further certify that my firm is properly licensed and skilled to perform the above described classes of work and is able to provide the required payment and performance bonds and insurance to perform the work. My company shall comply with all city, state, and federal requirements.

Submitted by: _____ Title: _____ Date: _____

Email Completed Form To: Counterpoint Construction Services, Inc
Attn: Counterpoint Construction
Email: info@counterpointcs.com
On behalf of the: **Roseland Charter School**



Viewing the Plan Room section of *Building News* is reserved for members of the NCBE.

This section includes local construction information and plans available in NCBE's online plan room, plus:

- City/County Notices
- Projects Out to Bid
- Septic Permits
- Building Permits
- New Projects
- Legal Notices

... NOT A MEMBER?

Additional NCBE member benefits include:

Workers' Comp Insurance	Group Health Insurance
Safety Training	Electronic Plan Room
Business-focused Seminars & Workshops	
Promotional Opportunities	
Networking Events & Community Service	

**If you are interested in becoming a member of the North Coast Builders Exchange, please call:
(707) 542-9502.**

Building Permits

Sonoma County - In Plan Check

Date	Owner	Contractor	Address	City	Type	Value
9/12/2022	n/a	n/a	4845 Vine Hill Rd	Graton	2nd unit	155,386
9/12/2022	n/a	n/a	902 Mustang Ct	Penngrove	2nd unit	153,048
9/12/2022	n/a	n/a	26 OXford Ct	Windsor	pool	145,132
9/12/2022	n/a	n/a	4950 Red Winery Rd	Geyserville	wine cave	764,530
9/12/2022	n/a	n/a	3851 Mark West Station Rd	Windsor	addition	335,534
9/12/2022	n/a	n/a	3851 Mark West Station Rd	Windsor	garage	26,667
9/13/2022	n/a	n/a	n/a	Geyserville	2nd unit	135,138
9/13/2022	n/a	n/a	n/a	Geyserville	garage	36,731
9/13/2022	n/a	n/a	n/a	Windsor	sfd	357,446
9/13/2022	n/a	n/a	2240 Lytton Springs Rd	Geyserville	retaining wall	13,126
9/13/2022	n/a	n/a	350 Treehaven Lane	Kenwood	sfd	447,096
9/13/2022	n/a	n/a	1650 Geysers Rd	Geyserville	sfd	823,293
9/14/2022	n/a	n/a	5083 Knollwood Ct	Windsor	sfd	345,479
9/14/2022	n/a	n/a	377 Shiloh Valley Ct	Windsor	pool	98,000
9/14/2022	n/a	n/a	20861 Heron Dr	Bodega Bay	remodel	20,000
9/15/2022	n/a	n/a	33550 Pine Mountain Rd	Cloverdale	cell tower mods	20,000
9/15/2022	n/a	n/a	21410 Geyserville Ave	Geyserville	deck	10,602
9/15/2022	n/a	n/a	16708 Meadow Oaks Dr	Glen Ellen	sfd	381,620
9/15/2022	n/a	n/a	1372 Los Alamos Rd	Kenwood	pool	150,500
9/15/2022	n/a	n/a	7186 Dry Creek Rd	Geyserville	pool	175,000
9/15/2022	n/a	n/a	6100 Hwy 116 N	Forestville	remodel	8,264
9/15/2022	n/a	n/a	15020 Rio Nido Rd	Guerneville	remodel	125,000

Mendocino County - In Plan Check

Date	Owner	Contractor	Address	City	Type	Value
10/24/2022	Andrew Shillabeer	n/a	34040 Pine Mountain Rd	Hopland	generator	
10/24/2022	Tim Shults	Pure Power Solutions	4300 Young Creek Rd	Ukiah	solar	
10/25/2022	Ozzie Bushway	Nat Collicot	3851 Ridgewood Rd	Willits	deck	
10/25/2022	Scott Enzler	Waggoners Custom Const	8200 East Rd	Redwood Valley	garage	
10/25/2022	Marc Steven	Tesla Energy	44550 Foster Ave	Laytonville	backup batteries	
10/25/2022	Evets Noldsey	Fort Bragg Electric	26400 Blueberry Hill Rd	Fort Bragg	new panel	
10/25/2022	Macintyre Hodges	n/a	322 Redwood Ave	Fort Bragg	3 one bedroom units	
10/25/2022	Jo Ann Walden	Fort Bragg Electric	25071 Charlene Lane	Fort Bragg	replace panel	
10/25/2022	Christopher Brazil	William Pell Const	937 Cedar St	Fort Bragg	garage	
10/25/2022	Judith Brown	n/a	44900 Main St	Mendocino area	water tank	
10/27/2022	Anarbol Galvez	n/a	1700 Mohawk Trail	Redwood Valley	fence	
10/27/2022	Anarbol Galvez	n/a	2270 Rd E	Redwood Valley	fence	
10/27/2022	Stacey Haley	n/a	2101 Baywood Way	Willits	storage	
10/27/2022	Gregg Amanda	Pyramid Builders	44360 No Hwy 101	Laytonville	garage	
10/27/2022	Nadiem Khoury	n/a	7801 Hwy 20	Potter Valley	garage	
10/27/2022	Blake More	n/a	45483 Iverson Rd	Gualala	yoga room	
10/27/2022	Linda Wilson	Dacing Dog Design Build	44731 Crestwood Dr	Mendocino area	demo deck	
10/27/2022	Thomas Charters	n/a	16297 Pearson Lane	Fort Bragg	reroof	
10/28/2022	Andrew Harney	Harney Construction	19150 Summers Lane	Fort Bragg	replace panel	
10/28/2022	Mendocino Forest Prc	n/a	32601 Holquist Lane	Fort Bragg	cell tower	
10/27/2022	Floyd Martin	Ackerberg Construction	3400 Sea Biscuit Dr	Navarro	sfd	
10/27/2022	Nicolas Zamora	Jordan Wathen	2035 Burke Rd	Talmage	roof solar	
10/27/2022	Anarbol Galvez	n/a	1700 Mohawk Trail	Redwood Valley	shed	
10/24/2022	Amit Kulkarni	Mendocino Solar Service	13115 Verde Dr	Mendocino area	change main breaker	
10/26/2022	Matthew Miller	Aragon Electric	1871 Ridge Rd	Ukiah	solar	
10/28/2022	Jed Wheeler	Project Solar	44280 Gordan Lane	Mendocino area	battery backup	

10/26/2022 Carly Blundell AC&R Services Inc 12651 Powerhouse Rd Potter Valley hvac

Lake County - In Plan Check

Date	Owner	Contractor	Address	City	Type	Value
10/3/2022	n/a	n/a	9447 Windflower Point	Clearlake	new dock	82,500
9/19/2022	n/a	n/a	5740 Sunrise Dr	Lower Lake	deck repair	7,500
9/19/2022	n/a	n/a	16045 Conestoga Rd	Hidden Valley Lake	sfd	330,328
9/6/2022	n/a	Bridges Construction	5962 Single Spring Dr	Kelseyville	remodel	45,800
9/13/2022	n/a	n/a	435 Park Way	Lakeport	garage	23,205
9/15/2022	n/a	n/a	4405 Thomas Dr	Lakeport	shipping containers	42,000
9/9/2022	n/a	Pabst Blue Ribbon General C	3830 Knob Cone Dr	Kelseyville	deck	78,844
9/29/2022	n/a	n/a	11000 Observation Rd	Kelseyville	cell tower mods	30,000
9/14/2022	n/a	Prime Time Builders	18781 North Shore Dr	Hidden Valley Lake	remodel	15,000
9/12/2022	n/a	n/a	2785 Finley East Rd	Finley	pumphouse	12,086
9/12/2022	n/a	n/a	5542 Hill Top Dr	n/a	remodel	10,000
9/12/2022	n/a	Bridges Construction	3178 Tamatack Way	Clearlake Oaks	fire station	400,000
9/12/2022	n/a	Bridges Construction	5140 Panorama Rd	Lower Lake	remodel	16,800
9/26/2022	n/a	n/a	17064 Hofacker Lane	Lower Lake	cell tower mods	15,000
9/15/2022	n/a	Jusdon Enterprises Inc	16329 Spruce Grove Rd	Hidden Valley Lake	remodel	10,868
9/15/2022	n/a	n/a	17700 Cantwell Ranch Rd	Lower Lake	pool	12,000
9/15/2022	n/a	Jesse Abrao Construction	2699 Scotts Creek Rd	Lakeport	rebuild office	70,038
9/19/2022	n/a	n/a	5932 Single Spring Dr	Kelseyville	sfd	369,612
9/21/2022	n/a	Mike Knight Construction	1501 Sandy Lane	Lakeport	metal building	60,770
9/21/2022	n/a	n/a	3868 Benmore Valley Rd	n/a	garage	111,191
9/29/2022	n/a	GVD Renovations Inc	19199 Hidden Valley Rd	Hidden Valley Lake	replace windows	11,740
9/29/2022	n/a	n/a	4687 Hawaina Way	Kelseyville	metal storage	12,384
9/23/2022	n/a	Lake Marine Construction	3246 Lakeshore Blvd	Nice	sheet piling	15,000
9/29/2022	n/a	Rees Purcell Construction	21541 Yankee Valley Rd	Hidden Valley Lake	sfd	455,465

Septic Permits

Sonoma County - 9/12-9/16/2022

Owner	Address	City	Type
n/a	5450 Eagle Ridge Rd	Penngrove	repair
n/a	23150 Dutcher Creek Rd	Geyserville	new
n/a	28737 River Rd	Cloverdale	repair
n/a	15851 Arnold Dr	Glen Ellen	new
n/a	841 Rigsby Lane	Twin Hills	new
n/a	4580 Stoetz Lane	Graton	repair
n/a	11025 Occidental Rd	Twin Hills	new
n/a	9750 Via Canada	Kenwood	new
n/a	305 Kuck Lane	Petaluma	repair
n/a	668 Hunter Lane	Penngrove	new
n/a	1905 Sebastopol Rd	Santa Rosa	destruct

Mendocino County - 10/26-10/28/2022

Owner	Address	City	Type
Danny Piffero	2851 Road I	Redwood Valley	repair
Craig Ahtye	29625 Hwy 20	Fort Bragg	new

Project #	Addenda	Bid Date	Bid Time	Project Name	City
22-02917	3	11/14/2022	2:00 PM	Nicholas Elementary School New School Construction and Modernization	Sacramento
22-03124	4	11/14/2022	2:00 PM	Rancho Cordova Parkway Sta 196+35.76 to Sta 211+65.14	Rancho Cordova
22-03657	3	11/14/2022	3:00 PM	On-Call Glass Repair and Replacement Services	Various Cities
22-03689	6	11/14/2022	12:00 PM	Primrose School - Walnut Creek (Sub-Bids Only)	Walnut Creek
22-00062	2	11/15/2022	10:00 AM	A&E On-Call Suspension Bridge Cable Investigations, Sampling and Testing Services (DOT #04A6569)	Various Counties
22-00416	0	11/15/2022	2:00 PM	CDOT 03-2J7904 Slope Paving (Pea Gravel,Stone Veneer),Decorative Pilaster & Boulders	Butte County
22-02139	0	11/15/2022	2:00 PM	AB94 Seismic Improvements PREQUALIFIED	Davis
22-02905	3	11/15/2022	3:00 PM	10190 Iron Rock Way Tenant Improvements	Elk Grove
22-02976	3	11/15/2022	2:00 PM	EGUSD - Elk Grove High School Inc. 3 - Building A & AG CTE (Sub Bids Only)	Elk Grove
22-02995	1	11/15/2022	2:00 PM	Fire Alarm Upgrades at Walnut Grove Elementary School	Walnut Grove
22-03015	0	11/15/2022	10:00 AM	Barry Roofing	Yuba City
22-03016	0	11/15/2022	10:15 AM	Lincrest Roofing	Yuba City
22-03018	0	11/15/2022	10:30 AM	Park Avenue Roofing	Yuba City
22-03030	2	11/15/2022	4:00 PM	Analy High School, Main Building Skylight Replacement	Sebastopol
22-03035	0	11/15/2022	2:00 PM	Pedestrian Crossing Enhancement Project	Vacaville
22-03047	1	11/15/2022	2:00 PM	OES Executive Office Remodel	Rancho Cordova
22-03063	0	11/15/2022	2:00 PM	Senior Center Improvements 2022	Healdsburg
22-03125	2	11/15/2022	11:00 AM	Maintenance Facility Yard Improvements for Battery Electric Bus (BEB) Fleet Project	Vallejo

22-03144	0	11/15/2022	2:00 PM	PREQUALIFICATION: Schaal Pool Repair	Davis
22-03610	3	11/15/2022	11:00 AM	2022-23 Grade 5 RAA Line Replacement Project	Richmond
22-03669	2	11/15/2022	2:00 PM	Cypress Grove Pump Station Project (Rebid)	Oakley
22-03694	2	11/15/2022	2:00 PM	Roque Moraes Drive Guardrail Project	Mill Valley
22-03780	1	11/15/2022	3:00 PM	San Jose Middle School Kitchen and Fire Alarm Project	Novato
22-03785	1	11/15/2022	2:00 PM	Electrical Infrastructure Hardening - Phase 1	Pleasant Hill
22-03789	1	11/15/2022	2:30 PM	Olive Elementary School Window Replacement Project	Novato
22-00351	4	11/16/2022	2:00 PM	CDOT 02-1H5704 Cold Plane, Place HMA, Drainage Work and Modify Electrical Systems	Shasta County
22-00418	0	11/16/2022	2:00 PM	CDOT 04-0J6014 Maintain Existing Planted Areas	Solano County
22-02912	6	11/16/2022	2:00 PM	Lake Oroville SRA Gold Flat Campground Upgrades (Rebid)	Oroville
22-02957	4	11/16/2022	3:00 PM	Police & Fire Administration Building HVAC Replacement	Napa
22-02969	2	11/16/2022	11:00 AM	CHP Redding Area Office - Carport Replacement Services	Redding
22-02977	0	11/16/2022	4:00 PM	Ruth Area Fire Fuel Reduction and Defensible Space Project	Trinity County
22-02998	4	11/16/2022	2:00 PM	City Hall Fire Alarm Replacement Project	West Sacramento
22-03014	2	11/16/2022	2:00 PM	Jackson Heights Elementary School PC Classrooms	Red Bluff
22-03026	4	11/16/2022	3:00 PM	Evergreen Road Bridge Replacement Project	Tehama County
22-03040	1	11/16/2022	2:00 PM	State Route 12 Landscape Improvements	Suisun City
22-03046	1	11/16/2022	2:00 PM	Access Barrier Removal Phase 1 & 2	Sacramento
22-03130	2	11/16/2022	2:00 PM	2008 Orion Bus Refurbishment & CNG Tank Replacement Services	Sacramento

22-03196	0	11/16/2022	2:00 PM	Marine Vessel Removal and Disposal	Sacramento
22-03776	1	11/16/2022	2:30 PM	Lu Sutton Elementary School HVAC System Upgrade	Novato
22-03779	1	11/16/2022	2:00 PM	Novato High School HVAC Replacement Project	Novato
22-03800	1	11/16/2022	2:00 PM	RFQ/P for Lease-Leaseback Construction Services at Sinaloa & San Jose Middle Schools Track & Field Project	Novato
22-03802	1	11/16/2022	2:00 PM	RFQ/P for Lease-Leaseback Construction Services at Marin Oaks Hill EC HVAC & Roofing Project	Novato
22-03829	1	11/16/2022	1:00 PM	West Marin Elementary School Improvements Lease/Leaseback Project (SUB BIDS REQUESTED)	Point Reyes Station
22-02846	3	11/17/2022	10:00 AM	Sycamore Trail Phase II Extension: Construction	West Sacramento
22-02870	1	11/17/2022	4:00 PM	SR-99 Corridor Bikeway Facility (Bikeway 99) Phase 5	Chico
22-02928	0	11/17/2022	2:00 PM	La Sierra Well Construction	Carmichael
22-02959	1	11/17/2022	2:00 PM	W. H. Williamson Park Irrigation Project	Rancho Cordova
22-03007	0	11/17/2022	2:00 PM	Districtwide Waste Collection, Disposal and Recycling Services	Santa Rosa
22-03045	2	11/17/2022	10:30 AM	IFB Parking Lot Seal and Stripe - Napa DMV	Napa
22-03075	1	11/17/2022	2:00 PM	Irene B. West Elementary School, Shade Structure	Elk Grove
22-03084	2	11/17/2022	2:30 PM	Shade Structures @ Various Sites, Phase 6	Elk Grove
22-03090	0	11/17/2022	3:00 PM	Valley High School, Roofing 2023	Sacramento
22-03094	1	11/17/2022	2:00 PM	Silverado Trail Guardrail Replacement	St. Helena
22-03096	2	11/17/2022	3:00 PM	Roseland Accelerated Middle School – Multi-Use Addition	Santa Rosa
22-03100	0	11/17/2022	11:00 AM	MJUSD - Geotechnical Hazardous Materials Service	Marysville
22-03102	0	11/17/2022	3:30 PM	Adult Education, Roofing 2023	Sacramento

22-03110	0	11/17/2022	4:00 PM	District Campuses CO2 Sensor Upgrades	Santa Rosa
22-03111	0	11/17/2022	4:30 PM	Charter CO2 Sensor Upgrades	Santa Rosa
22-03184	0	11/17/2022	2:00 PM	Metro Air Parkway Roadway Widening Sta. 113+00 - 172+00 East Side Improvements	Sacramento
22-03198	0	11/17/2022	3:00 PM	Interceptors Pump Station N52 and N53 Low Voltage VFD Retrofit Project	Elk Grove
22-03230	2	11/17/2022	4:00 PM	RFSOQ for the FY23/FY24 Canal Modernization Project - Capital Project Management Services	Various Cities
22-03625	4	11/17/2022	2:00 PM	DVWS 12" Main Rehabilitation Project, Phase II	Pleasant Hill
22-03633	4	11/17/2022	2:00 PM	Danville Boulevard-Orchard Court Complete Streets Improvement Project	Danville
22-03658	1	11/17/2022	2:30 PM	Downtown Corridors Bicycle and Pedestrian Improvements	Concord
22-03670	0	11/17/2022	4:00 PM	RFP for Civil Engineering Design Services for Alberta Way Pavement Rehabilitation	Concord
22-03764	1	11/17/2022	10:00 AM	Water Treatment Plant Solids Disposal Services	Concord & Oakley
22-02860	1	11/18/2022	5:00 PM	IT Security, Continuity, Response and Recovery Planning	West Sacramento
22-02980	0	11/18/2022	2:00 PM	Housing Rehabilitation for Single Story / Single Family Residence (Rebid) (NOTICE ONLY)	Red Bluff
22-03043	0	11/18/2022	2:00 PM	Palermo Union Elementary School District Architectural Services (RFQ / RFP)	Palermo
22-03101	1	11/18/2022	4:00 PM	RFQ-Electrical Engineer and Consulting Services for Electric Vehicle Master Plan	Marysville
22-03103	1	11/18/2022	4:00 PM	RFP 901724 - Yuba County Government Center Mezzanine Design-Build	Marysville
22-03113	1	11/18/2022	10:00 AM	Folsom CDD Permit Center	Folsom
22-03142	0	11/18/2022	2:00 PM	Transportation Roofing Project	Woodland
22-03143	0	11/18/2022	5:00 PM	The Lyla Apartments (Sub Bids Only)	Elk Grove
22-03149	1	11/18/2022	5:00 PM	Pedestrian Crossing Improvements Project	Woodland

22-03183	1	11/18/2022	3:00 PM	FMAP 2022 Concrete Block Wall Project	Yuba City
22-03189	1	11/18/2022	5:00 PM	Quick Quack Car Wash #22-104 Redding - Hartnell (No GC Openings / Sub-Bids Only / Select Bidders)	Redding
22-03190	0	11/18/2022	3:30 PM	Airport Self Storage (Sub Bids Only)	Rio Vista
22-03191	0	11/18/2022	4:00 PM	Yuba County Tree Removal RFP - 901729	Marysville
22-03194	0	11/18/2022	2:30 PM	RFB - One 2023 Half-ton, 4 door, 4X4 Pickup	Colusa
22-03241	0	11/18/2022	1:00 PM	Plumas National Forest Bear Locker Install	Challenge
22-03435	2	11/18/2022	5:00 PM	RFP On-Call Engineering Services for Infrastructure and Planning - West County Wastewater	Richmond
22-03460	1	11/18/2022	4:00 PM	Liberty Union High School District Future District Public Projects (Prequalification)	Brentwood
22-03539	1	11/18/2022	2:00 PM	RFP On Call Electrical Support - Port of Richmond	Richmond
22-03031	0	11/21/2022	2:00 PM	7403 Watt Ave (Sewer Force Main only)	North Highlands
22-03086	0	11/21/2022	11:00 AM	Parking Lot Repair Rebid	Ukiah
22-03137	0	11/21/2022	4:00 PM	Broken Window Replacement at the John E. Moss Federal Building	Sacramento
22-03177	0	11/21/2022	3:00 PM	Furnish Rock and Mineral Products for the City of Redding	Redding
22-03666	0	11/21/2022	5:00 PM	RFP for Consulting Services for Parks Master Plan	Novato
22-03722	0	11/21/2022	5:00 PM	RFP for East Bay Plain Subbasin Site Characterization Project - Nested Monitoring Wells - EBMUD	San Pablo, Richmond, Berkeley and Hayward
22-00067	5	11/22/2022	2:00 PM	Brazos Branch Timber Bridge Repairs - Phase 1	Sonoma and Marin Counties
22-02820	1	11/22/2022	3:30 PM	Landscaping Maintenance Services	Sacramento
22-03004	0	11/22/2022	2:30 PM	Preventative Maintenance and Non-Scheduled Repair Services for Automatic Sliding/Swinging Doors at the DMV Headquarters Complex	Sacramento
22-03027	0	11/22/2022	2:00 PM	RFQ Professional Energy Conservation Design-Build Services	Fairfield

22-03117	0	11/22/2022	2:00 PM	Anaerobic Digester #1 Cleaning 2022	Fairfield
22-03193	0	11/22/2022	3:00 PM	Senior Center Pedestrian Bridge Repair	Napa
22-03529	3	11/22/2022	3:00 PM	RFP for Biosolids Drying and Pyrolysis System/Services	Brentwood
22-03703	2	11/22/2022	2:00 PM	Downtown Paving and Sidewalk Rehabilitation Project - Phase 3	Mill Valley
22-03778	3	11/22/2022	2:30 PM	Civic Park Community Center Accessibility and Lobby Improvements Project	Walnut Creek
22-03197	0	11/23/2022	2:00 PM	Specialty Weed Control in City Parks	Sacramento
22-03204	0	11/23/2022	4:00 PM	Acorn Valley Plaza Apartments Sub Bids Only	Ukiah
22-03762	1	11/23/2022	2:00 PM	Mount Tamalpais State Park Water Well Drilling	Marin County
22-02999	0	11/28/2022	11:00 AM	Fire Alarm & Personal Alarm Systems Installation Services - SAC	Represa
22-03049	0	11/28/2022	3:00 PM	Furnishing Three-Phase, Pad-Type Distribution Transformers to the City of Redding (Rebid)	Redding
22-03053	2	11/28/2022	10:00 AM	Water-Based Fire Protection System (FPS)	Represa
22-03071	0	11/28/2022	10:00 AM	RFQ A&E Broadband Middle Mile Network	Mendocino County
22-03119	0	11/28/2022	2:00 PM	Fall River Valley CSD Test Well - POSTPONED INDEFINITELY	Fall River Mills
22-03120	0	11/28/2022	2:30 PM	After-Hours Janitorial Services at the Fairfield DMV Field Office	Fairfield
22-03180	2	11/28/2022	5:30 PM	CDBG-DR Roadside Fuel Reduction	Marysville
22-03273	0	11/28/2022	2:30 PM	FMAP 2022 Asphalt Repair Project	Marysville
22-03731	0	11/28/2022	4:00 PM	RFP for Civil Engineering Design Services - Residential Pavement Maintenance - Phase E	Concord
22-00066	5	11/29/2022	2:00 PM	Next Generation Radio System IFB 2022-004 Coyote Peak, Muir Beach, Mt. Tamalpais, Point Reyes and OTA	Petaluma/Muir Beach/Mill Valley/Inverness/Nov
22-00425	0	11/29/2022	2:00 PM	CDOT 02-3J7804 Place Hot Mix Asphalt (Type A) and Replace Asphalt Concrete Surfacing	Trinity County

22-02459	10	11/29/2022	2:00 PM	DCA Energy Upgrades and Alterations	Sacramento
22-02838	3	11/29/2022	2:00 PM	Ellis Creek Water Recycling Facility Tertiary Filtration Expansion - UV Disinfection Equipment Modifications Project	Petaluma
22-02992	4	11/29/2022	2:00 PM	Covelo SR 162 Corridor Multi-Purpose Trail Phases I and II	Covelo
22-03044	0	11/29/2022	2:00 PM	Solano State Prison - Roof Replacement Phase I, II & III	Vacaville
22-03072	0	11/29/2022	3:00 PM	Woodacre Sewer Main Replacement	Redding
22-03097	0	11/29/2022	2:00 PM	Railroad Depot Restrooms Accessibility Alterations	Santa Rosa
22-03106	0	11/29/2022	5:00 PM	Architectural & Engineering Design for the Corning City Plaza and Recreation Center	Corning
22-03217	0	11/29/2022	2:00 PM	Chiller Maintenance Services	Sacramento
22-03708	1	11/29/2022	2:00 PM	CHP Marin Area Office - Automatic Gate Maintenance Services	Corte Madera
22-03783	4	11/29/2022	2:00 PM	Marine Outfall Diffuser & Anode Replacements	Richmond
22-03901	0	11/29/2022	10:00 AM	Point Molate Beach Park Tree Removals	Richmond
22-03902	0	11/29/2022	10:00 AM	Santa Fe Union Park - Fencing to be Moved with New Post	Richmond
22-00895	0	11/30/2022	5:00 PM	Rental Housing Development - Community Development Block Grant - Disaster Recovery, Multifamily Housing Program (CDBG-DR MHP) - Spring 2022	Paradise
22-02861	0	11/30/2022	2:00 PM	CUPCAA for the City of Davis	Davis
22-03098	0	11/30/2022	2:00 PM	RFP Valley Oaks Elementary School Classroom Building Lease - Leaseback	Galt
22-03112	0	11/30/2022	1:00 PM	Replacement of two Homes on the Hopland Rancheria	Hopland
22-03166	0	11/30/2022	2:30 PM	Ridgepoint Elementary School Fencing Project	Sacramento
22-03167	0	11/30/2022	2:15 PM	Frontier Elementary School Fencing Project	Sacramento
22-03169	0	11/30/2022	2:00 PM	Castori Elementary School Clock / Bell / PA Project	Sacramento

22-03187	0	11/30/2022	4:00 PM	AutoCAD License Renewal	Sacramento
22-03188	0	11/30/2022	5:00 PM	2 Fully Equipped, 33,000 Pound, 5 Cubic Yard, Diesel Powered, 2 Axle Dump Trucks	Sacramento
22-03219	0	11/30/2022	10:00 AM	Heating, Ventilating, and Air Conditioning (HVAC) Maintenance and Repair Services	McClellan Park
22-03220	0	11/30/2022	10:00 AM	Overhead Crane Maintenance Services	McClellan Park
22-03814	0	11/30/2022	2:00 PM	Sycamore Avenue Trunk Sewer Replacement	Hercules & Pinole
22-03837	0	11/30/2022	2:00 PM	Roof Replacements at Antioch Water Park and Water Treatment Plant	Antioch
21-03490	0	12/1/2022	2:00 PM	CUPCCAA - Yuba County Office of Education 2021-2022	Marysville
21-03502	0	12/1/2022	2:00 PM	CUPCCAA for Corning Union High School District 2022	Corning
21-03506	0	12/1/2022	2:00 PM	CUPCCAA-Wheatland High School	Wheatland
22-00071	1	12/1/2022	2:00 PM	Design of the Petaluma North Station & Minor Design Modifications to Pathways and Grade Crossing	Petaluma and Sonoma County
22-00175	0	12/1/2022	2:00 PM	CUPCCAA for Junction Elementary School District 2022	Palo Cedro
22-00322	0	12/1/2022	2:00 PM	CUPCCAA for Weaverville / Douglas City Parks and Recreation 2022	Weaverville / Douglas City
22-00402	0	12/1/2022	2:00 PM	CUPCCAA for Gridley Unified School District 2022	Gridley
22-00520	0	12/1/2022	2:00 PM	CUPCCAA for Cascade Union Elementary School District 2022	Anderson
22-01038	0	12/1/2022	2:00 PM	CUPCCAA for Lassen View Elementary School District 2022	Los Molinos
22-02858	3	12/1/2022	2:00 PM	Twin Rivers Block D (Sub Bids Only)	Sacramento
22-03069	1	12/1/2022	2:00 PM	Toyon Water Plant Demolition	Shasta Lake
22-03159	0	12/1/2022	2:30 PM	Mangini Ranch Phase 2 Village 5 & 6 Wet Utilities	Folsom
22-03179	0	12/1/2022	2:00 PM	Coronado Family - Metal Building	Olivehurst

22-03218	0	12/1/2022	2:30 PM	Rock and Concrete Grinder Supply and Delivery	Oroville
22-03223	0	12/1/2022	2:00 PM	District Office HVAC Replacement Project	McClellan Park
22-03224	0	12/1/2022	2:15 PM	Grant High School - Outdoor Learning Shade Structure, Grant West High School - Outdoor Learning Shade Structure, Grant West High School - Fencing Project	Sacramento
22-03225	0	12/1/2022	2:00 PM	DESIGN-BUILDER PREQUALIFICATION - Parking Structure 7	Sacramento
22-03271	0	12/1/2022	2:00 PM	Truck Mixed Recycling for the City of Redding	Redding
22-03663	1	12/1/2022	2:00 PM	Clayton Road Traffic Operation Improvements - Phase 2	Concord
22-03826	1	12/1/2022	2:00 PM	RFP for Architectural, Engineering, and Interior Design Services for the Downtown Public Library Modernization Project	San Rafael
22-02930	0	12/2/2022	2:00 PM	Heating, Ventilating and Air Conditioning Replacement, Correctional Treatment Center CTC-I, Facility A	Represa
22-03232	0	12/2/2022	2:00 PM	CFS & Yokayo Center Chain Link Fence Generator Enclosures	Ukiah
22-03246	0	12/2/2022	3:00 PM	Commercial Electric Solid-State KWH / Demand Meters for the City of Redding	Redding
22-03062	0	12/5/2022	1:00 PM	Kenilworth Junior High School HVAC Upgrades to Buildings F & H	Petaluma
22-03146	0	12/5/2022	5:00 PM	Request for Engineering Proposals - Project P-5A, Pressure Zone 3D Fire Flow Improvement	El Verano
22-03214	0	12/5/2022	2:00 PM	Santa Anita Condensate Line and Pan Repair Project	Woodland
22-03245	0	12/5/2022	5:00 PM	Six (6) 19,500 pound GVWR Standard Cab Mechanics Service Truck with Multi-drive Air/hydraulic System	Sacramento
22-03135	0	12/6/2022	1:00 PM	Casa Grande High School Building M HVAC and Reroof Project	Petaluma
22-03156	0	12/6/2022	2:00 PM	Replace Windows at Water Pollution Control Laboratory and Annex Lab	Rancho Cordova
22-03165	0	12/6/2022	2:00 PM	Westside Park Improvements	Rio Linda
22-03229	0	12/6/2022	1:00 PM	Birch Lane Roofing Project at Birch Lane Elementary	Davis
22-03231	0	12/6/2022	2:00 PM	2023 Collection System Rehabilitation Project	Napa

22-03247	0	12/6/2022	2:00 PM	Mechanical Job Order Contract	Davis
22-03248	0	12/6/2022	2:00 PM	Winston Gardens Unit and Community Building Accessibility Improvement Project	Oroville
22-00403	0	12/7/2022	2:00 PM	CDOT 03-4F6504 CRCP, HMA (Type A), Rdwy Exc, Class 2 AB, Fiber Optic Cable Systems	Yolo County
22-00445	0	12/7/2022	2:00 PM	CDOT 02-3J8004 Place AR Chip Seal with Replace Asphalt Concrete Surfacing	Trinity County
22-00449	0	12/7/2022	2:00 PM	CDOT 04-0K1204 Install Rectangular Rapid Flashing Beacon Systems	Alameda and Contra Costa Counties
22-00453	0	12/7/2022	2:00 PM	CDOT 01-0H2204 HMA (Type A), Class 2 AB, and Imported Borrow	Lake County
22-03165	4	12/7/2022	2:00 PM	College of Marin Learning Resource Center Increment 1 - Lease/Leaseback (SUB BIDS REQUESTED)	Kentfield
22-03186	0	12/7/2022	2:00 PM	Sacramento Valley Station Platform Repair Project	Sacramento
22-03235	0	12/7/2022	11:00 AM	Rancho Cordova Surface Treatment Project	Rancho Cordova
22-03262	0	12/7/2022	2:00 PM	Lawrence Park Improvements	Sacramento
22-03270	0	12/7/2022	1:00 PM	Penngrove Elementary School Modular Classroom, Library and Site Work - Building Demolition Phase	Penngrove
22-00404	0	12/8/2022	2:00 PM	CDOT 03-3H5404 Raise Alignment, Place HMA, Structural Concrete & Bridge Rail	Butte County
22-03025	0	12/8/2022	1:00 PM	Cabling Infrastructure – E-rate at Various Sites	Fairfield
22-03131	0	12/8/2022	10:00 AM	ARC Drought Tolerant Landscape & Irrigation	Sacramento
22-03132	0	12/8/2022	2:00 PM	FLC Drought Tolerant Landscape & Irrigation	Folsom
22-03210	0	12/8/2022	4:00 PM	Clocks / Bells / Paging System for Gridley Unified School District	Gridley
22-03228	0	12/8/2022	4:00 PM	RFP - Emergency Generator Annual Preventative Maintenance and On-Call Services	Marysville
22-03249	0	12/8/2022	4:00 PM	City Hall - Mini Split Installation	Clearlake
22-03133	0	12/9/2022	10:00 AM	SCC Drought Tolerant Landscape & Irrigation	Sacramento

22-03134	0	12/9/2022	2:00 PM	CRC Drought Tolerant Landscape & Irrigation	Sacramento
22-03222	0	12/9/2022	5:00 PM	SETA - Children and Family Services - Building Maintenance, Repair and Construction Projects	Sacramento
22-03240	0	12/9/2022	2:00 PM	Walnut Grove ADA Restroom - 2022	Sacramento
22-03164	1	12/12/2022	2:00 PM	West Sacramento Electric Vehicle (EV) Charging Station Installation Project	West Sacramento
22-00441	0	12/13/2022	2:00 PM	CDOT 04-3W5304 Polyester Concrete Overlay and Grind Existing Concrete Pavement	Contra Costa County
22-03109	0	12/13/2022	1:00 PM	YCCD - Repair, Operations, and Maintenance of Existing Solar Photovoltaic Systems - Second Procurement Process	Marysville
22-03205	0	12/13/2022	3:00 PM	T.R. Smedberg Middle School, Roofing 2023	Sacramento
22-03252	0	12/13/2022	2:00 PM	Hearn Community Hub Project - PM, CM&I Services and Technical Advisory	Santa Rosa
22-03253	0	12/13/2022	3:00 PM	Construction Management Services for Lake Boulevard Transmission Water Main Project	Redding
22-03265	0	12/13/2022	3:30 PM	Arthur Butler Elementary School, Roofing 2023	Elk Grove
22-03272	0	12/13/2022	4:00 PM	Joseph Sims Elementary School, Roofing 2023	Elk Grove
22-03661	0	12/13/2022	2:00 PM	Public Address System Improvements - BART #15NE-120	Lafayette and San Francisco
22-00431	0	12/14/2022	2:00 PM	CDOT 04-3W5704 Polyester Concrete Overlay	Sonoma County
22-03236	0	12/14/2022	2:00 PM	Gregory Bateson Building Renovation DGS Project #004466 Bid Package #4 (Sub Bids Only)	Sacramento
22-03267	0	12/14/2022	2:00 PM	Chico Gas Electric HVAC Package Unit Replacement	Chico
22-03344	20	12/14/2022	1:30 PM	Upper San Leandro Water Treatment Plant Maintenance and Reliability, and Upper San Leandro and Sobrante Water Treatment Plants Chemical Systems Safety Improvements - EBMUD	Oakland and El Sobrante
22-03199	0	12/15/2022	11:15 AM	Clearlake Youth Center - Flooring Installation	Clearlake
22-03242	0	12/15/2022	3:00 PM	Water Distribution System Replacement Project - Lewiston Community Services District	Lewiston
22-02787	3	12/16/2022	2:00 PM	RFP Adult Detention Behavioral Health Unit Design	Sonoma County

22-03136	0	12/16/2022	2:00 PM	RFP For Water Systems Disruption Master Plan	Fort Bragg
22-03227	0	12/16/2022	2:00 PM	Construction Services for Lease-Leaseback Project Delivery Roofing Replacement at Oak Chan Elementary and Carl H. Sundahl Elementary Schools - Folsom Folsom Cordova Unified School District	
22-03170	0	12/19/2022	3:00 PM	Bus Maintenance and Administrative Facility Rehabilitation	Red Bluff
22-03256	2	12/20/2022	2:00 PM	Folsom Main, Left Wing and Right Wing Dams	Folsom
22-00419	0	12/22/2022	2:00 PM	CDOT 04-0K1604 Construct RHMA, Lighting System, and Concrete Barrier	Alameda and Contra Costa Counties
22-03092	0	12/23/2022	3:00 PM	UCDH Pharmacy Distribution and Warehouse	Sacramento
22-02906	1	12/29/2022	10:00 AM	Water Meter Replacement Program	Folsom
22-03003	4	12/29/2022	2:00 PM	JOC - Middle-Mile Broadband Network Project	Various
21-03340	0	12/30/2022	2:00 PM	CUPCCAA for Maxwell Unified School District 2022	Maxwell
21-03575	0	12/30/2022	2:00 PM	Notice Inviting Contractors 2022	Ukiah
22-00972	0	12/30/2022	2:00 PM	CUPCCAA for Calistoga Joint Unified School District	Calistoga
22-01601	0	12/30/2022	2:00 PM	CUPCCAA Lucerne Elementary School District	Lucerne
22-01942	0	12/30/2022	2:00 PM	CUPCCAA for Woodland Joint Unified School District	Woodland
22-01943	0	12/30/2022	2:00 PM	CUPCCAA for West Sonoma County Union High School District	Sebastopol
22-01944	0	12/30/2022	2:00 PM	CUPCCAA for Washington Unified School District	West Sacramento
22-01945	0	12/30/2022	2:00 PM	CUPCCAA for Sebastopol Union School District	Sebastopol
22-02857	0	12/30/2022	2:00 PM	CUPCCAA for Elk Grove USD	Elk Grove
22-02935	0	12/30/2022	2:00 PM	CUPCCAA for Harmony Union School District	Occidental
22-02936	0	12/30/2022	2:00 PM	CUPCCAA for Sonoma Valley Unified School District	Sonoma

22-02937	0	12/30/2022	2:00 PM	CUPCCAA for Roseland Charter School	Santa Rosa
22-02938	0	12/30/2022	2:00 PM	CUPCCAA for Roseland School District	Santa Rosa
22-02940	0	12/30/2022	2:00 PM	CUPCCAA for Healdsburg Unified School District	Healdsburg
22-02941	0	12/30/2022	2:00 PM	CUPCCAA for Gravenstein Union School District	Sebastopol
22-02942	0	12/30/2022	2:00 PM	CUPCCAA for Monte Rio Union School District	Monte Rio
22-02943	0	12/30/2022	2:00 PM	CUPCCAA for Waugh Elementary School District	Petaluma
22-03155	0	12/30/2022	2:00 PM	CUPCCAA for Santa Rosa City Schools	Santa Rosa
22-03160	0	12/30/2022	2:00 PM	CUPCCAA for Pope Valley Union Elementary School District	Pope Valley
22-03162	0	12/30/2022	2:00 PM	CUPCCAA for Bellevue Union School District	Santa Rosa
22-03182	0	12/30/2022	2:00 PM	CUPCCAA for Galt Joint Union Elementary School District	Galt
22-03201	0	12/30/2022	2:00 PM	CUPCCAA for San Juan Unified School District	Sacramento
22-03211	0	12/30/2022	2:00 PM	CUPCCAA for Yolo County Office of Education	Woodland
22-03238	0	12/30/2022	2:00 PM	CUPCCAA for Guerneville School District	Guerneville
22-03239	0	12/30/2022	2:00 PM	CUPCCAA for the City of Rohnert Park	Rohnert Park
22-03260	0	12/30/2022	2:00 PM	CUPCCAA for Travis USD	Fairfield
21-03452	0	12/31/2022	2:00 PM	CUPCCAA for Franklin Elementary School District - 2022	Yuba City
22-00034	0	12/31/2022	2:00 PM	CUPCCAA for Tri-County Schools Insurance Group	Yuba City
22-00156	0	12/31/2022	2:00 PM	CUPCCAA for Sonoma County Water Agency	Sonoma County
22-00217	0	12/31/2022	2:00 PM	CUPCCAA for Sutter County Development Services Department 2022	Yuba City

22-03221	0	12/31/2022	2:00 PM	Application for Qualified Contractors List	Ukiah
22-02636	8	1/5/2023	2:00 PM	Corpyard Modular Transitional Buildings Project	West Sacramento
22-03129	0	1/5/2023	3:00 PM	Sacramento Regional Wastewater Treatment Plant BioGeneration Facility Project	Elk Grove
22-03807	1	1/5/2023	2:00 PM	Marin County Juvenile Hall Toilet Replacement	San Rafael
22-03274	0	1/9/2023	2:00 PM	Office Building Project - Shasta Community Services District	Redding
22-02241	2	1/12/2023	10:00 AM	April Lane Panel Replacement	Yuba City
22-03593	0	1/17/2023	2:00 PM	Traction Power Facilities Replacement, Walnut Creek - BART #15EK-105	Walnut Creek
22-03154	0	3/1/2023	2:00 PM	Request for Inclusion on LCOE's Contractor List	Lakeport
22-03287	0	3/25/2023	2:00 PM	Prequalification Process for the Measure G Bond Facilities Project	Novato
22-03250	0	10/31/2023	2:00 PM	CUPCCAA Corning Union Elementary School District 2023	Corning
22-02946	0	12/1/2023	2:00 PM	CUPCCAA for Burnt Ranch Elementary School District 2023	Burnt Ranch
22-03138	0	12/1/2023	2:00 PM	CUPCCAA for City of Redding 2023	Redding
22-03200	0	12/29/2023	2:00 PM	CUPCCAA for Calistoga Joint Unified School District	Calistoga

Legal Notices

Sonoma County - Notice of Completion

Date	Record	Owner	Contractor	Address	City
10/21/2022	2022067182	Barbara Simpson	George Drady Construction	229 Grove St	Windsor
10/21/2022	2022067234	Sonoma Co Pacific Associates	Pacific West Builders	3522 Santa Rosa Ave	Santa Rosa
10/21/2022	2022067331	Tri Pointe Homes Holdings	Tri Pointe Homes Holdings	1821 Bautista Way	Petaluma
10/21/2022	2022067391	Richmond American Homes	Richmond American Homes	2045 Kingwood Rd	Rohnert Park
10/21/2022	2022067394	Ned Ryder	Ryder Homes	2007 Applejack Way	Santa Rosa
10/21/2022	2022067406	Quarry Heights LLC	Quarry Heights LLC	7 Corundum Ct	Petaluma
10/21/2022	2022067413	KB Home South Bay Inc	KB Home South Bay Inc	5718 Knight Rd	Rohnert Park
10/21/2022	2022067417	Penn Grove Mountain	Willowglen Homes	7462 Walker Way	Rohnert Park
10/24/2022	2022067708	City of Healdsburg	WestPac Construction	340 Forman Lane	Healdsburg
10/24/2022	2022067709	City of Healdsburg	Yukon Construction	Various locals	Healdsburg
10/24/2022	2022067727	Waugh Elem School District	DMR Builders	1851 Hartman Lane	Petaluma
10/25/2022	2022067969	Renew Now Homes LLC	Renew Now Homes LLC	32 Ryan Lane	Cotati
10/25/2022	2022067977	Renew Now Homes LLC	Renew Now Homes LLC	28 Ryan Lane	Cotati
10/25/2022	2022067988	Renew Now Homes LLC	Renew Now Homes LLC	30 Ryan Lane	Cotati
10/25/2022	2022067998	Renew Now Homes LLC	Renew Now Homes LLC	34 Ryan Lane	Cotati
10/25/2022	2022068012	Monte Rio School District	Kirby Construction	20700 Foothill Dr	Monte Rio
10/25/2022	2022068090	Town of Windsor	WesPac Construction	Stellar Lane	Windsor
10/26/2022	2022068239	KB Home South Bay Inc	KB Home South Bay Inc	5726 Knight Rd	Rohnert Park
10/26/2022	2022068297	Oaks at Foss Creek	Oaks at Foss Creek	1664 Winding Creek Way	Healdsburg
10/26/2022	2022068299	Oaks at Foss Creek	Oaks at Foss Creek	1656 Winding Creek Way	Healdsburg
10/26/2022	2022068355	Sectarian Properties Inc	Blue Mountain Const Services	77 Birch Haven Way	Santa Rosa
10/26/2022	2022068418	Sectarian Properties Inc	Blue Mountain Const Services	83 Birch Haven Way	Santa Rosa
10/27/2022	2022068426	County of Sonoma	Team Ghilotti Inc	Cazadero Hwy	Cazadero
10/27/2022	2022068436	Tri Pointe Homes Holdings	Tri Pointe Homes Holdings	1812 Pico St	Petaluma

Sonoma County - Claim of Lien

Date	Record	Owner	Value	Claimant
10/24/2022	2022067663	Christopher Rosenthal	56,937.98	Bravo Restoration & Const
10/25/2022	2022068199	Paseo Vista Inc	193,827.54	Mead Clark Lumber
10/25/2022	2022068200	Paseo Vista Inc	22,827.61	Mead Clark Lumber
10/27/2022	2022068441	McElligott Construction	8,000.00	Granados Concrete Inc

Sonoma County - Release of Lien

Date	Record	Owner	Claimant
10/25/2022	2022068050	Pullman Lofts First pahse LLC	Reyeff Electric Inc
10/25/2022	2022068081	Lagunitas Brewing	Speciality Warehouse Inc
10/25/2022	2022068168	American Orthodontics Corp	MKB Construction
10/25/2022	2022068169	Anita Tandon	MKB Construction

Mendocino County - Notice of Completion

Date	Record	Owner	Contractor	Address	City
10/19/2022	11942	Potter Valley Community Schoc	Northwest Construction	10401 Main St	Potter Valley

Mendocino County - Claim of Lien

Date	Record	Owner	Value	Claimant
10/17/2022	11817	Jonathan Lake	26,156.69	Weeks Drilling & pump Co

Mendocino County - Release of Lien

Date	Record	Owner	Claimant
10/17/2022	11931	Adam Vlasak	Nicholas Rains